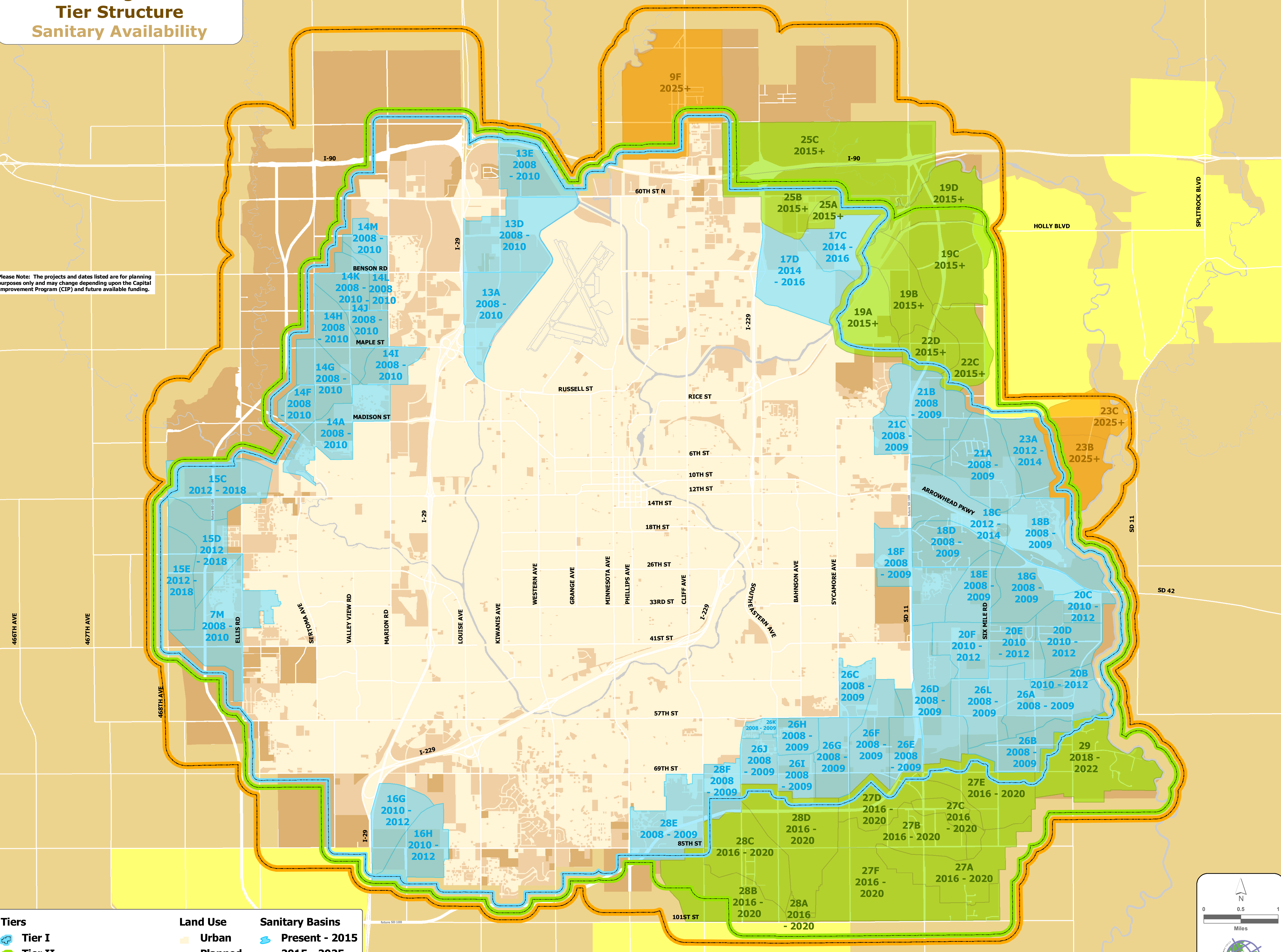


City of Sioux Falls Growth Management Plan Tier Structure Sanitary Availability

Please Note: The projects and dates listed are for planning purposes only and may change depending upon the Capital Improvement Program (CIP) and future available funding.



Tiers	Land Use	Sanitary Basins
Tier I	Urban	Present - 2015
Tier II	Planned	2015 - 2025
Tier III	Future	2025 - 2035
Neighboring Growth Areas	Rural	

Miles

Map Date: May 10, 2016
City Planning Department
Planning & Development
Phone: 605.336.3400