

July 25th, 2019

City of Sioux Falls  
224 W. 9<sup>th</sup> Street  
PO Box 7402  
Sioux Falls, SD 57117

**Inspection Date:** 07/24/19  
**Project Number:** 19-001  
**Inspector:**

**June Inspection Report for:** Roosevelt Channel Phase 1

**Site Location:** Roosevelt Channel Phase 1 is located in western Sioux Falls; phase 1a is located between 26<sup>th</sup> and 32<sup>nd</sup> Street to the west of South Sertoma Avenue; the site is approximately centered at 43°31'22.44" N, 96°49'7.57" W. See reports on *Roosevelt Channel Phase 1b* for information dealing with the portion of channel phase 1 located to the east of South Sertoma Avenue.

**Site Goals:** Roosevelt Channel Phase 1a is a detention pond with wetland characteristics. We are using chemical control to reduce the abundance of cattails (*Typha angustifolia*) and noxious weeds, especially Canada thistle (*Cirsium arvense*), in order to facilitate the establishment of native species.

**Site Conditions:**

Cattails remain abundant throughout the channel. The cattails may be choking out other vegetation. Canada thistle is sporadically found throughout the site, particularly in buffer and bench sections of the site. Sandbar Willow (*Salix Interior*) were present in the NE corner and SE channel in the buffer and into the channel. Wet cool spring, lots of thistles should be present when it does warm up.

1. Channel Erosion on the northwestern, southwestern, and southeastern channels were observed (Figure 1)
2. Buffer zone has been mowed
3. Common Reed (*Phragmites australis*) present.
4. Purple Loosestrife (*Lythrum salicaria*) present

**Maintenance to be performed:**

- Spray thistles and other weeds with Platoon herbicide
- Spray Common Reed and Purple Loosestrife with Habitat herbicide
- Repair erosion along the named channels and install proper erosion control structures.

**Additional Remarks:**

See attached figures.

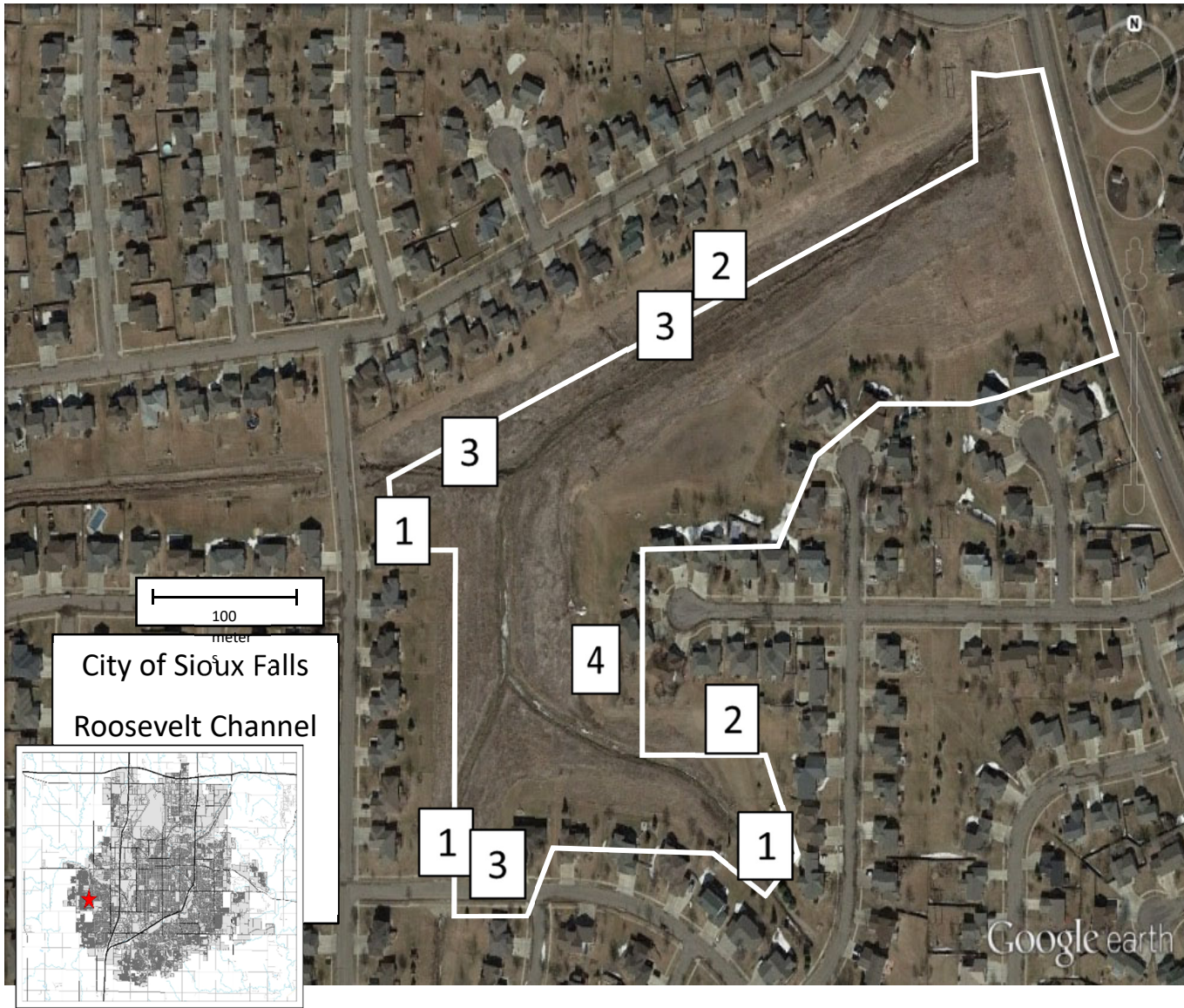




Figure 1: Erosion occurring along the southwest channel



Figure 2: Erosion along the Southeast Channel



Figure 3: Erosion around culvert and channel of SE channel