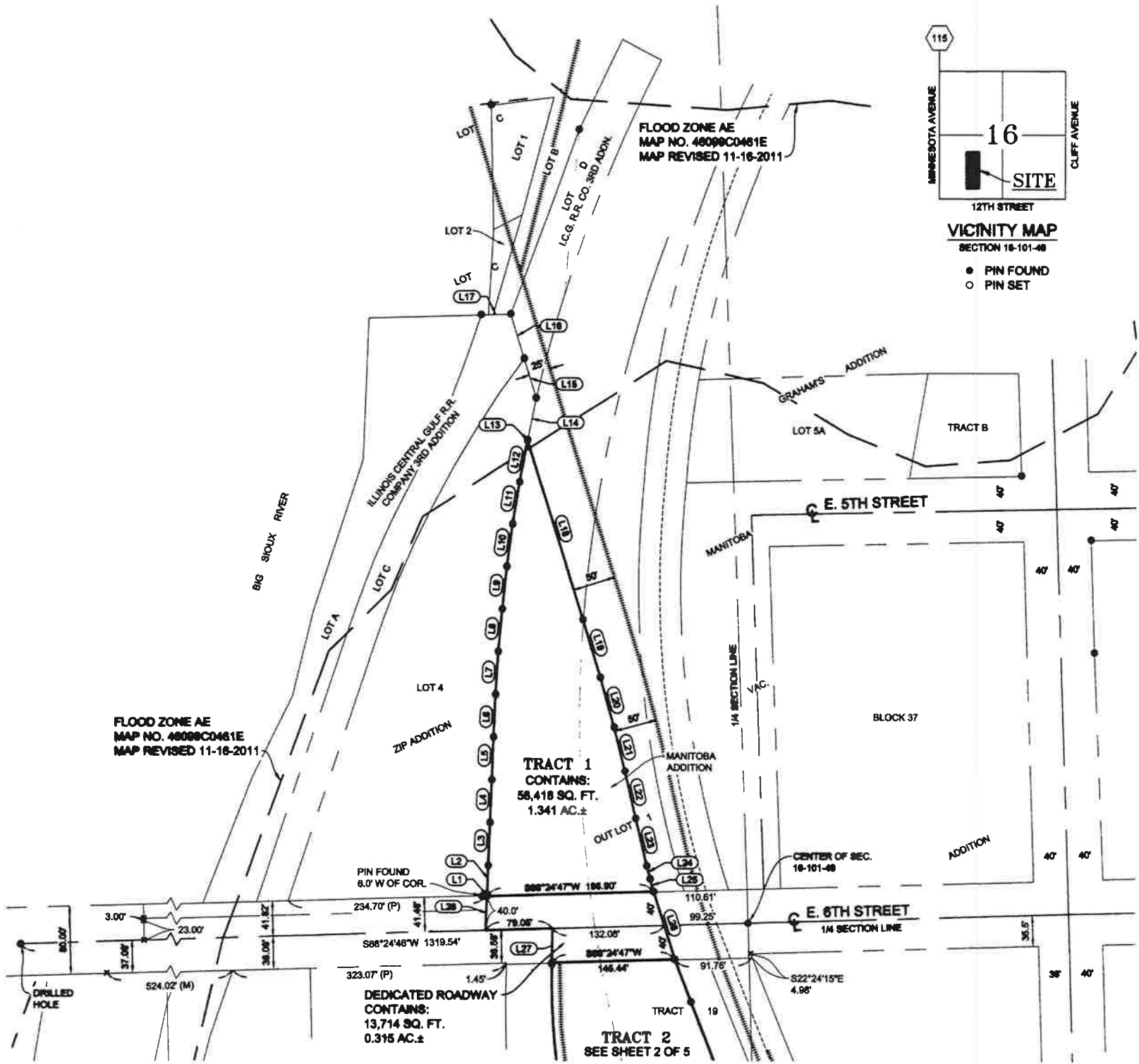


D 6-675
M 10-994

TRACTS 1, 2, 3 AND 4 OF BURLINGTON NORTHERN SANTA-FE 4TH ADDITION TO THE CITY OF SIOUX FALLS, MINNEHAHA COUNTY, SOUTH DAKOTA



| LINE TABLE | | |
|------------|---------------|----------|
| LINE # | BEARING | DISTANCE |
| L1 | N 02°14'17" E | 1.31' |
| L2 | N 02°13'41" E | 34.80' |
| L3 | N 02°19'59" E | 49.98' |
| L4 | N 02°12'12" E | 50.02' |
| L5 | N 02°16'42" E | 50.04' |
| L6 | N 02°33'07" E | 49.97' |
| L7 | N 03°27'05" E | 49.97' |
| L8 | N 06°07'59" E | 49.93' |
| L9 | N 08°11'04" E | 49.99' |
| L10 | N 07°30'17" E | 50.01' |
| L11 | N 08°18'58" E | 49.91' |
| L12 | N 10°38'58" E | 49.04' |
| L13 | N 10°38'48" E | 0.93' |
| L14 | N 11°28'30" E | 50.11' |
| L15 | N 17°12'43" W | 48.15' |

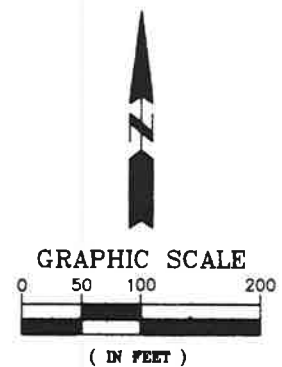
| LINE TABLE | | |
|------------|---------------|----------|
| LINE # | BEARING | DISTANCE |
| L16 | N 17°11'22" W | 53.85' |
| L17 | S 88°31'57" W | 34.83' |
| L18 | S 17°33'16" E | 219.36' |
| L19 | S 17°05'09" E | 70.46' |
| L20 | S 15°38'56" E | 60.46' |
| L21 | S 14°08'15" E | 52.89' |
| L22 | S 13°03'25" E | 56.94' |
| L23 | S 13°42'15" E | 56.57' |
| L24 | S 14°50'32" E | 15.60' |
| L25 | S 16°22'36" E | 15.60' |
| L26 | S 17°42'44" E | 83.30' |
| L27 | N 00°58'10" E | 40.07' |
| L28 | N 02°13'38" E | 40.08' |

Note:
The bearing system for this plat is based on the UTM Zone 14 North.

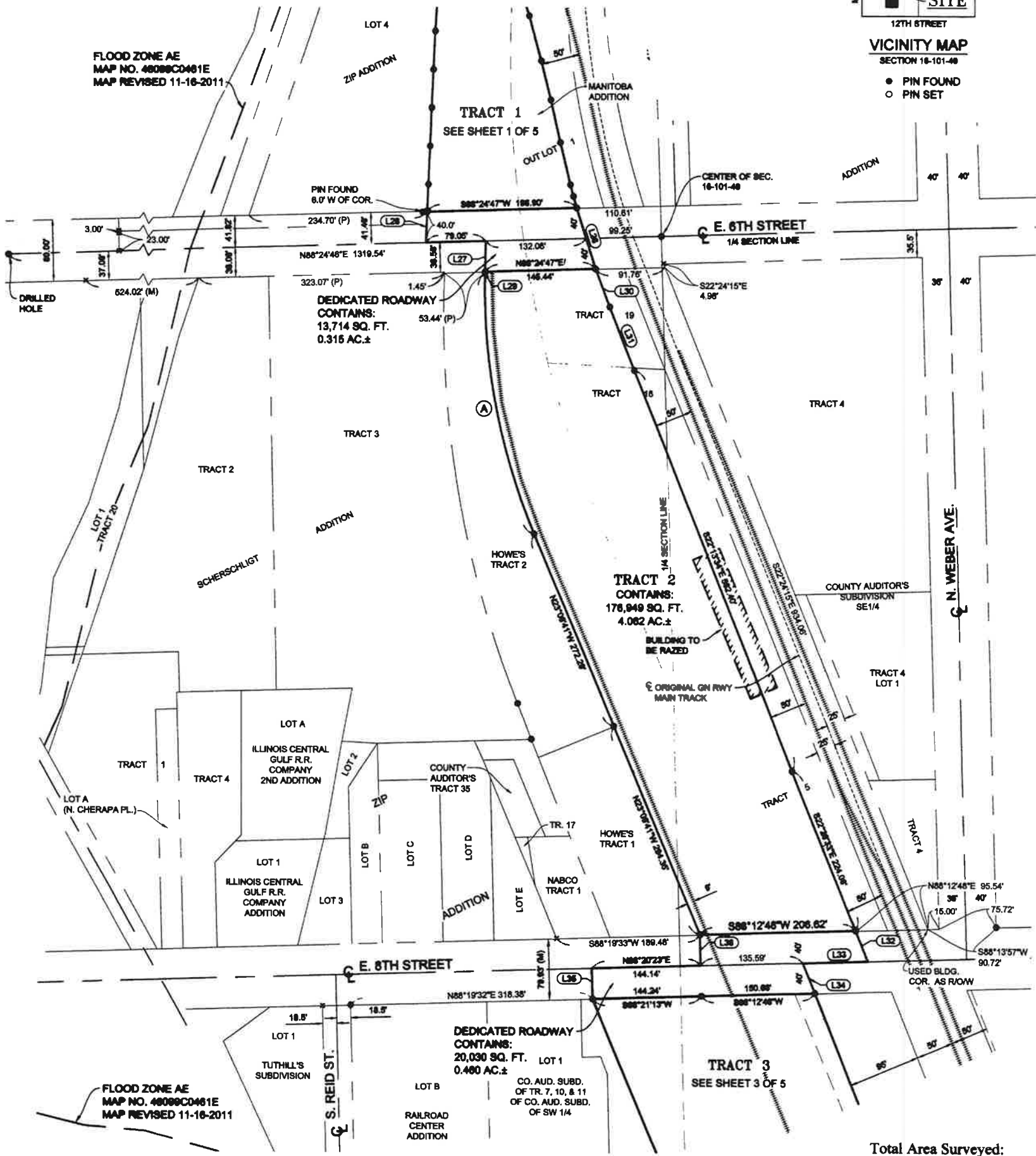
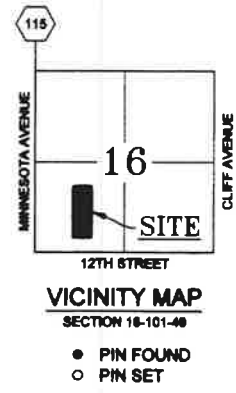
Legend

- - Denotes 5/8 inch by 18 inch rebar set and marked by License No. 4478
- - Denotes found monument
- x - Denotes found chiseled "X"
- (R) - Record Distance
- (M) - Measured Distance

Total Area Surveyed:
11.204 Acres±



TRACTS 1, 2, 3 AND 4 OF BURLINGTON NORTHERN SANTA-FE 4TH ADDITION TO THE CITY OF SIOUX FALLS, MINNEHAHA COUNTY, SOUTH DAKOTA



Total Area Surveyed: 11.204 Acres±

| LINE # | BEARING | DISTANCE |
|--------|---------------|----------|
| L26 | S 17°42'44" E | 83.30' |
| L27 | N 00°58'10" E | 40.07' |
| L28 | N 02°13'36" E | 40.08' |
| L29 | N 00°58'07" E | 1.57' |
| L30 | S 21°13'56" E | 53.00' |
| L31 | S 21°41'26" E | 86.62' |
| L32 | S 22°28'36" E | 42.78' |
| L33 | S 88°12'47" W | 86.13' |
| L34 | S 22°25'26" E | 42.74' |
| L35 | N 01°38'51" W | 38.97' |
| L36 | N 01°47'11" W | 40.00' |

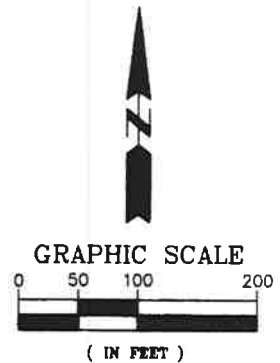
Ⓐ CURVE DATA

- Δ = 24°08'38"
- R = 827.53'
- T = 176.73'
- L = 348.23' (A)
- 345.87' (C)
- N 11°05'36" W

Note:
The bearing system for this plat is based on the UTM Zone 14 North.

Legend

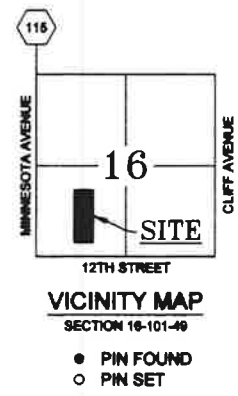
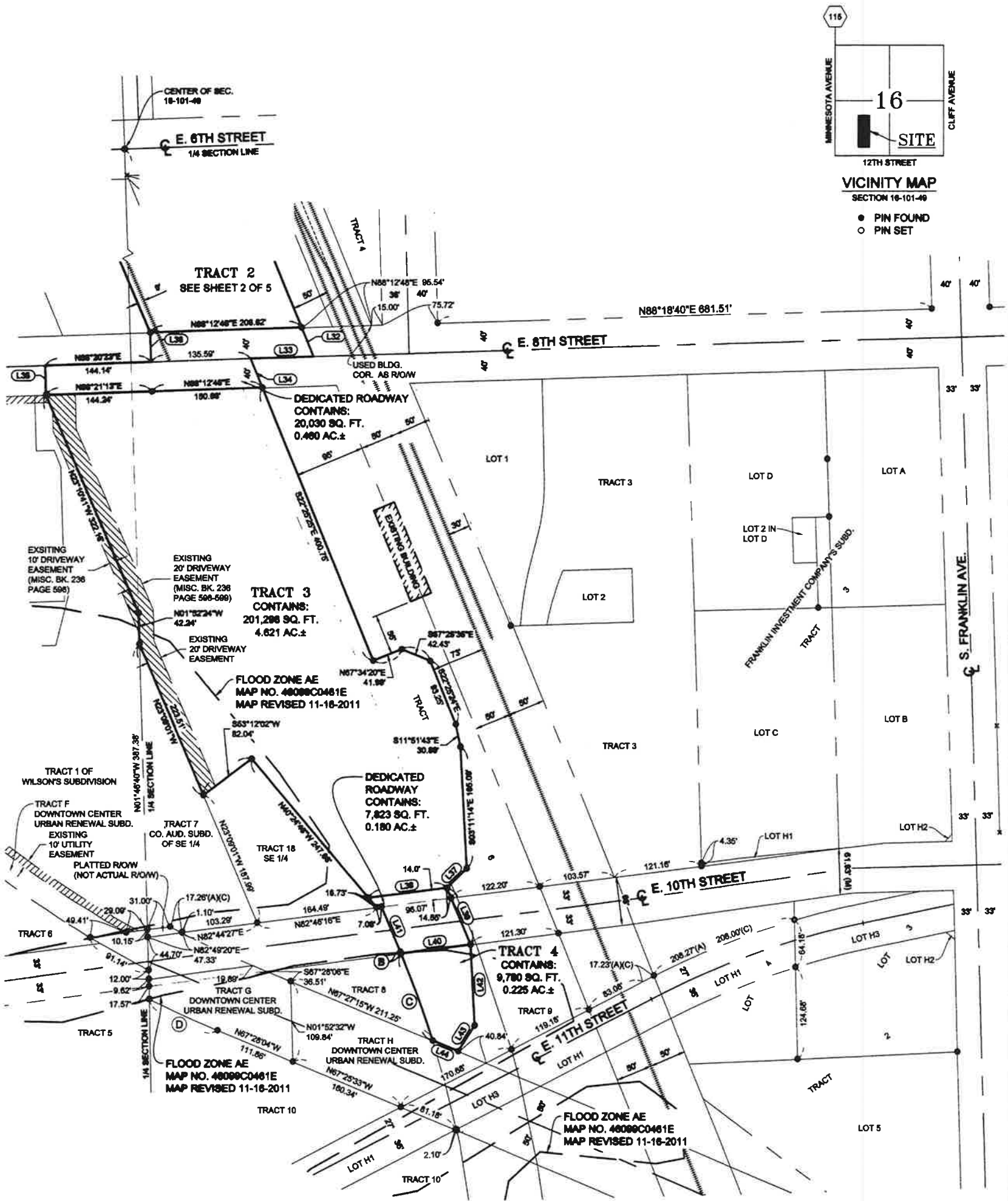
- - Denotes 5/8 inch by 18 inch rebar set and marked by License No. 4478
- - Denotes found monument
- x - Denotes found chiseled "X"
- (R) - Record Distance
- (M) - Measured Distance



Sayre Associates

218 S. Duluth Avenue • Sioux Falls, SD 57104
Phone: (605) 332-7211 • Fax: (605) 332-7222
Engineers • Surveyors

TRACTS 1, 2, 3 AND 4 OF BURLINGTON NORTHERN SANTA-FE 4TH ADDITION TO THE CITY OF SIOUX FALLS, MINNEHAHA COUNTY, SOUTH DAKOTA



| LINE TABLE | | |
|------------|---------------|----------|
| LINE # | BEARING | DISTANCE |
| L32 | S 22°28'36" E | 42.76' |
| L33 | S 88°12'47" W | 86.13' |
| L34 | S 22°25'28" E | 42.74' |
| L36 | N 01°38'51" W | 39.97' |
| L36 | N 01°47'11" W | 40.00' |
| L37 | S 45°27'29" W | 37.86' |
| L38 | S 82°48'15" W | 108.30' |
| L39 | S 23°08'02" E | 83.22' |
| L40 | N 82°48'07" E | 96.07' |
| L41 | N 23°08'02" W | 86.16' |
| L42 | S 03°11'15" E | 110.00' |
| L43 | S 32°13'00" W | 41.88' |
| L44 | N 67°27'17" W | 38.00' |

P. CURVE DATA

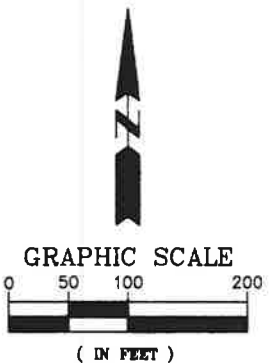
- (B) Δ = 00°08'13"
R = 1382.40'
T = 1.25'
L = 2.50' (A)
2.50' (C)
N 23°03'37" W
- (C) Δ = 05°14'22"
R = 1382.40'
T = 63.25'
L = 126.42' (A)
126.37' (C)
N 20°25'38" W
- (D) Δ = 03°58'38"
R = 1480.40'
T = 51.40'
L = 102.75' (A)
102.73' (C)
N 65°12'16" W

Note:
The bearing system for this plat is based on the UTM Zone 14 North.

Legend

- - Denotes 5/8 inch by 18 inch rebar set and marked by License No. 4478
- - Denotes found monument
- × - Denotes found chiseled "X"

- (R) - Record Distance
- (M) - Measured Distance



Total Area Surveyed:
11.204 Acres±

TRACTS 1, 2, 3 AND 4 OF BURLINGTON NORTHERN SANTA-FE 4TH ADDITION TO THE CITY OF SIOUX FALLS, MINNEHAHA COUNTY, SOUTH DAKOTA

SURVEYOR'S CERTIFICATE

I, EUGENE F. MAURICE, A REGISTERED LAND SURVEYOR OF THE STATE OF SOUTH DAKOTA, DO HEREBY CERTIFY THAT I DID ON OR BEFORE AUGUST 1, 2013, SURVEY AND REPLAT A PART OF OUT LOT NO. 1 OF MANITOBA ADDITION TO SIOUX FALLS, SOUTH DAKOTA; PLAT A PART OF RAILROAD ROW IN THE NW ¼; REPLAT A PART OF TRACTS 18 & 19 OF COUNTY AUDITOR'S SUBDIVISION OF THE SW ¼; PLAT A PART OF RAILROAD ROW IN THE SW ¼; REPLAT A PART OF TRACT 5 AND A PART OF TRACT 6 OF COUNTY AUDITOR'S SUBDIVISION OF THE SE ¼; AND PLAT A PART OF RAILROAD ROW IN THE SE ¼, ALL IN SECTION 16, TOWNSHIP 101 NORTH, RANGE 48 WEST OF THE 5TH PRINCIPAL MERIDIAN, MINNEHAHA COUNTY, SOUTH DAKOTA, INTO TRACTS AND DEDICATED ROADWAYS AS SHOWN. THE SAME SHALL HEREAFTER BE KNOWN AND DESCRIBED AS TRACTS 1, 2, 3 AND 4 OF BURLINGTON NORTHERN SANTA-FE 4TH ADDITION TO THE CITY OF SIOUX FALLS, MINNEHAHA COUNTY, SOUTH DAKOTA.

DATED THIS 20th DAY OF JULY 2015

Eugene F. Maurice
S.D. REGISTERED LAND SURVEYOR NO. 4478



OWNER'S STATEMENT

WE, BNSF RAILWAY COMPANY, A DELAWARE CORPORATION, DO HEREBY STATE THAT IT OWNS OR CONTROLS THE LAND INCLUDED IN THE ABOVE PLAT AS TRACTS 1, 2, 3 AND 4 AND THAT SAID PLAT HAS BEEN MADE AT OUR REQUEST AND IN ACCORDANCE WITH OUR INSTRUCTIONS FOR THE PURPOSES OF TRANSFER.

TO THE EXTENT NOT ALREADY DONE SO, WE HEREBY DEDICATE TO THE PUBLIC FOR PUBLIC USE FOREVER, THE STREETS, ROADS AND ALLEYS, PARKS, AND PUBLIC GROUNDS, IF ANY, AS SHOWN ON SAID PLAT, INCLUDING ALL SEWERS, CULVERTS, BRIDGES, WATER DISTRIBUTION LINES, SIDEWALKS AND OTHER IMPROVEMENTS ON OR UNDER THE STREETS, ALLEYS, PARKS, AND PUBLIC GROUNDS WHETHER SUCH IMPROVEMENTS ARE SHOWN OR NOT.

WE FURTHER CERTIFY THAT THIS PLATTING OF SAID DESCRIBED TRACTS 1, 2, 3 AND 4 OF BURLINGTON NORTHERN SANTA-FE 4TH ADDITION TO THE CITY OF SIOUX FALLS, MINNEHAHA COUNTY, SOUTH DAKOTA, DOES HEREBY VACATE THE FOLLOWING PLATTINGS: PART OF OUT LOT NO. 1 OF MANITOBA ADDITION TO SIOUX FALLS, SOUTH DAKOTA, ON FILE AT THE REGISTER OF DEEDS OFFICE IN BOOK 1, PAGE 47; VACATES A PART OF TRACTS 18 & 19 OF COUNTY AUDITOR'S SUBDIVISION OF THE SW ¼ OF SECTION 16, T101N, R48W, MINNEHAHA COUNTY, SOUTH DAKOTA, ON FILE AT THE REGISTER OF DEEDS OFFICE IN BOOK 5, PAGE 13; AND VACATES A PART OF TRACT 5 AND PART OF TRACT 6 OF COUNTY AUDITOR'S SUBDIVISION OF THE SE ¼ OF SECTION 16, T101N, R48W, MINNEHAHA COUNTY, SOUTH DAKOTA, ON FILE AT THE REGISTER OF DEEDS OFFICE IN BOOK 5, PAGE 14. SAID PLATS AND PORTIONS OF PLATS, HEREBY VACATED, ARE SITUATED WITHIN DESCRIBED TRACTS 1, 2, 3 AND 4 OF BURLINGTON NORTHERN SANTA-FE 4TH ADDITION TO THE CITY OF SIOUX FALLS, MINNEHAHA COUNTY, SOUTH DAKOTA, AS SURVEYED.

DATED THIS 3rd DAY OF September 2015

OWNER: BNSF RAILWAY COMPANY, A DELAWARE CORPORATION

BY: Kurt Geringer
Kurt Geringer
General Counsel

STATE OF Texas
COUNTY OF Tarrant

ON THIS 3rd DAY OF September, 2015, BEFORE ME, THE UNDERSIGNED OFFICER, APPEARED Kurt Geringer, KNOWN TO BE THE PERSON WHOSE NAME IS SUBSCRIBED TO THE WITHIN INSTRUMENT AND ACKNOWLEDGED TO ME THAT HE EXECUTED THE SAME FOR THE PURPOSES THEREIN CONTAINED.

IN WITNESS WHEREOF, I HAVE HEREUNTO SET MY HAND AND OFFICIAL SEAL THIS 3rd DAY OF September, 2015.

MY COMMISSION EXPIRES: 9/01/2016

Rhonda L. Burton
NOTARY PUBLIC, COUNTY, STATE OF Texas



CITY ENGINEER'S CERTIFICATE

I, CHAD HUME, CITY ENGINEER OF THE CITY OF SIOUX FALLS, DO HEREBY CERTIFY THAT THIS PLAT HAS BEEN REVIEWED BY ME OR MY AUTHORIZED AGENT AND THAT THIS PLAT IS RECOMMENDED FOR APPROVAL BY THE CITY COMMISSION.

SIGNED ON THIS 10 DAY OF September 2015

Chad Hume
CITY ENGINEER, CITY OF SIOUX FALLS, SOUTH DAKOTA

CITY PLANNING COMMISSION CERTIFICATE

APPROVAL OF THE PLAT KNOWN AND DESCRIBED AS TRACTS 1, 2, 3 AND 4 OF BURLINGTON NORTHERN SANTA-FE 4TH ADDITION TO THE CITY OF SIOUX FALLS, MINNEHAHA COUNTY, SOUTH DAKOTA, IS HEREBY GRANTED BY THE CITY PLANNING COMMISSION ON THIS 11 DAY OF September, 2015.

Art Anderson
CHAIR, CITY PLANNING COMMISSION

CITY DIRECTOR OF PLANNING AND BUILDING SERVICES CERTIFICATE

I, MIKE COOPER, CITY DIRECTOR OF PLANNING AND BUILDING SERVICES OF THE CITY OF SIOUX FALLS, DO HEREBY CERTIFY THAT THE CURRENT ZONING IS AS LISTED BELOW AND THAT THIS PLAT HAS BEEN REVIEWED BY ME OR MY AUTHORIZED AGENT AND THAT THIS PLAT IS RECOMMENDED FOR APPROVAL.

| CURRENT ZONING CLASSIFICATION | ACRES |
|---|--------|
| I-2 INDUSTRIAL & UNZONED (RAILROAD ROW) | 11.204 |

DATE: 9.11.15

Mike Cooper
CITY DIRECTOR OF PLANNING AND BUILDING SERVICES, CITY OF SIOUX FALLS, SOUTH DAKOTA

TRACTS 1, 2, 3 AND 4 OF BURLINGTON NORTHERN SANTA-FE 4TH ADDITION TO THE CITY OF SIOUX FALLS, MINNEHAHA COUNTY, SOUTH DAKOTA

MAYOR'S CERTIFICATE

I, MIKE T. HUETHER, MAYOR OF THE CITY OF SIOUX FALLS, DO HEREBY CERTIFY THAT THIS PLAT HAS BEEN APPROVED BY ME OR MY AUTHORIZED AGENT AND THAT THE CITY CLERK IS HEREBY DIRECTED TO CERTIFY THE SAME THEREON.

APPROVED THIS 11 DAY OF Sept, 2015.



MAYOR, CITY OF SIOUX FALLS, SOUTH DAKOTA

CITY CLERK'S CERTIFICATE

I, LORIE HOGSTAD, THE DULY APPOINTED, QUALIFIED AND ACTING CITY CLERK OF THE CITY OF SIOUX FALLS, SOUTH DAKOTA, HEREBY CERTIFY THAT THE CERTIFICATES OF APPROVAL ARE TRUE AND CORRECT INCLUDING THE SIGNATURES THEREON, AND THAT ANY SPECIAL ASSESSMENTS WHICH ARE LIENS UPON THE LAND SHOWN IN THE ABOVE PLAT, AS SHOWN BY THE RECORDS IN MY OFFICE, ON THIS 11 DAY OF Sept, 2015, HAVE BEEN PAID IN FULL.

Ass. Lorie Hogstad, CMC
CITY CLERK OF RECORDS, SIOUX FALLS, SOUTH DAKOTA

CITY APPROVAL IS
NULL AND VOID 120 DAYS
AFTER THE SIGNATURE DATE



COUNTY TREASURER'S CERTIFICATE

I, TREASURER OF MINNEHAHA COUNTY, SOUTH DAKOTA, DO HEREBY CERTIFY THAT ALL TAXES WHICH ARE LIENS UPON ANY LAND INCLUDED IN THE ABOVE (AND THE FOREGOING) PLATS, AS SHOWN BY THE RECORDS OF MY OFFICE, HAVE BEEN FULLY PAID.

DATED THIS 14 DAY OF Sept, 2015.

Norma Erickson Beguty
TREASURER OF MINNEHAHA COUNTY, SOUTH DAKOTA



DIRECTOR OF EQUALIZATION

I, DIRECTOR OF EQUALIZATION OF MINNEHAHA COUNTY, SOUTH DAKOTA, DO HEREBY CERTIFY THAT A COPY OF THE ABOVE PLAT HAS BEEN FILED AT MY OFFICE.

Kyle Helseth, JR
DIRECTOR OF EQUALIZATION, MINNEHAHA COUNTY, SOUTH DAKOTA

REGISTER OF DEEDS R522530

FILED FOR RECORD THIS 21st DAY OF September, 2015, AT 14:10 O'CLOCK - M., AND RECORDED IN BOOK 77 OF PLATS ON PAGE 225.

Judith D. Ristey
REGISTER OF DEEDS, MINNEHAHA COUNTY, SOUTH DAKOTA



Sayre
Associates

218 S. Duluth Avenue • Sioux Falls, SD 57104
Phone: (605) 332-7211 • Fax: (605) 332-7222
Engineers • Surveyors