

# Arrowhead Parkway “Phase 2” – Final Design From Highline Avenue to Willow Run Entrance

## Project Contacts:

### Infrastructure Design Group, Inc.

Krista May, PE  
Project Engineer  
KristaM@InfrastructureDG.com  
Office: 605-271-5527  
Cell: 605-929-0267

Chad Hanisch, PE  
Project Manager  
ChadH@InfrastructureDG.com  
Office: 605-271-5527  
Cell: 605-359-5313

### City of Sioux Falls

Josh VandenBos  
Project Manager  
Office: 605-367-8601

This newsletter is available by **email**. If you wish to be added to the email distribution list, please send an email to Becky Schuurmans at [BeckyS@InfrastructureDG.com](mailto:BeckyS@InfrastructureDG.com)

***\*Please continue to visit the project website listed below for future updates on the overall corridor.***

### Arrowhead Parkway Corridor Review:

Phase 1 construction is complete and final plans are being prepared for the next construction phase.

### Phase 1 – Construction:

Phase 1 construction from Sycamore Avenue to Highline Avenue was completed the summer of 2019.

### Phase 2 – Final Design:

Phase 2 Final Design limits are from east of Highline Avenue through the intersection of 26<sup>th</sup> Street. Preliminary design was completed for the corridor in 2016. With Phase 1 complete, the City and SDDOT are ready to continue the improvements to the east corridor limits.

### Phase 2 Overall Improvements:

Phase 2 continues where Phase 1 left off just east of Highline Avenue through the Willow Run entrance. The portion from Willow Run entrance to E. 26<sup>th</sup> Street has been added to the SDDOT Road Design project to be constructed in 2023. The SDDOT design project also continues east of 26<sup>th</sup> Street to Highway 11.

Preliminary design highlighted the following planned improvements:

- 3 lanes in each direction through the intersection of Veterans Parkway
- 2 lanes in each direction from east of Veterans Parkway through 26<sup>th</sup> Street

- Landscaped median throughout the corridor
- Signalized intersections at Veterans Parkway, 6-Mile Road, and others to be determined during final design.
- Water main, storm sewer, and street lighting throughout the project limits
- Pedestrian underpasses at the intersection of Veterans Parkway
- Realignment of 6-Mile Road

### Phase 2A Construction Schedule:

The first portion of Phase 2 to be constructed will be from ½ mile west of Six Mile Road to the Willow Run entrance including the realignment of Six Mile Road. The tentative bid date is early fall 2020 which

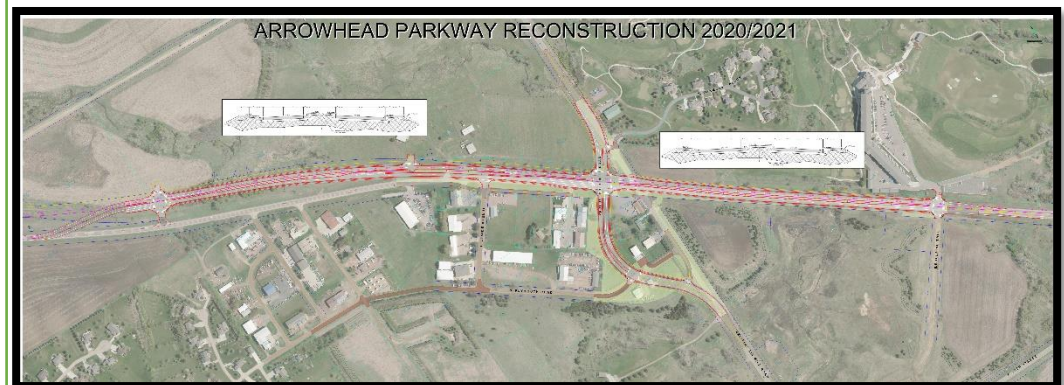
could allow some work to be completed through winter. Most work is anticipated to occur in 2021.

### Phase 2B Construction Schedule:

The second portion of Phase 2 construction including the Veteran’s Parkway intersection is anticipated to follow in 2023/2024.

Appraisals for the entire Phase 2 corridor will be starting in early 2020 with a focus on the properties impacted by the 2020/2021 construction phase.

If you have any questions for current and future phases of the project, please contact the team members listed on the left or visit the below websites.



Overall Corridor Project Website: <http://www.siouxfalls.org/public-works/special-projects/arrowhead-pkwy.aspx>