
**Department of Transportation
Disadvantaged Business Enterprise Plan**

City of Sioux Falls, SD

Submitted via TrAMS

March 2022

POLICY STATEMENT

Section 25.1, 26.23 Objectives and Policy Statement

The City of Sioux Falls has established a Disadvantaged Business Enterprise (DBE) program as prescribed by the applicable regulation of the U.S. Department of Transportation (DOT), 49 CFR Part 26. The City of Sioux Falls has received direct federal financial assistance from the Department of Transportation and as a condition of receiving this assistance, the City of Sioux Falls has signed an assurance that it will comply with 49 CFR Part 26. USDOT funding that is first received by South Dakota Department of Transportation (SDDOT) and then sub-allocated to the City of Sioux Falls shall coordinate all 49 CFR Part 26 regulations through the SDDOT DBE program.

It is the policy of the City of Sioux Falls to ensure that DBEs, as defined in Part 26, have an equal opportunity to receive and participate in DOT-assisted contracts. It will also be our policy:

1. To ensure nondiscrimination in the award and administration of DOT-assisted contracts.
2. To create a level playing field on which DBEs may compete fairly for DOT-assisted contracts.
3. To ensure that the DBE Program is narrowly tailored in accordance with applicable law.
4. To ensure that only firms that fully meet 49 CFR Part 26 eligibility standards and have been certified by the state of South Dakota DOT are permitted to participate as DBEs.
5. To assist certified DBE firms in removing barriers to participation in DOT-assisted contracts.
6. To assist to the greatest extent possible in the development of firms that may compete in the marketplace outside the DBE program.

The Director of Finance has been delegated as the DBE Liaison Officer. In that capacity, the Director of Finance is responsible for the implementation of all aspects of the DBE program. Implementation of the DBE program is accorded the same priority as compliance with all other legal obligations incurred by the City of Sioux Falls in its financial assistance agreements with the Department of Transportation.

The City of Sioux Falls has disseminated this policy statement, by email, to the Mayor and City Council and all of the departments of City government. The statement has been distributed by mail to DBE and non-DBE business entities performing work on DOT-assisted contracts and is included in bid packets distributed for all DOT-assisted construction projects.

DocuSigned by:



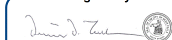
Paul TenHaken, Mayor

4/12/2022

Date

ATTEST;

DocuSigned by:



Denise Tucker

CA70C30A84714B0...

SUBPART A—GENERAL REQUIREMENTS

Section 26.1 Objectives

The objectives of this program are found in the policy statements on the first page of this program.

Section 26.3 Applicability

The City of Sioux Falls is the recipient of federal transit funds authorized by Titles I, III, V, and VI of ISTEA, Pub. L. 102-240 or by federal transit laws in Title 49, U.S. Code, or Titles I, III, and V of the TEA-21, Pub. L. 105-178. Titles I, III, and V of the Safe, Accountable, Flexible, Efficient Transportation Equity Act: A Legacy for Users (SAFETEA-LU), Pub. L. 109-59, 119 Stat. 1144; Divisions A and B of the Moving Ahead for Progress in the 21st Century Act (MAP-21), Pub. L. 112-141, 126 Stat. 405; and Title III of the Fixing America's Surface Transportation (FAST) Act, Pub. L. 114-94, 129 Stat.1312.

Section 26.5 Definitions

The City of Sioux Falls will use terms in this program that have their meanings defined in 49 CFR §26.5.

Section 26.7 Non-discrimination Requirements

The City of Sioux Falls will never exclude any person from participation in, deny any person the benefits of, or otherwise discriminate against anyone in connection with the award and performance of any contract covered by 49 CFR Part 26 on the basis of race, color, sex, or national origin.

In administering its DBE program, the City of Sioux Falls will not, directly or through contractual or other arrangements, use criteria or methods of administration that have the effect of defeating or substantially impairing accomplishment of the objectives of the DBE program with respect to individuals of a particular race, color, sex, or national origin.

Section 26.11 Record Keeping Requirements

Reporting to DOT: 26.11(b)

The City of Sioux Falls will report DBE participation to DOT by submitting information required annually through the "Uniform Report of DBE Awards or Commitments and Payments" form pursuant to the instructions, found in Appendix B to 49 CFR Part 26. The City of Sioux Falls will also report the DBE contractor firm's contact information, the required information about participating DBE. All reporting is done through the official Transit Award Management System (TrAMS) reporting system, or another format acceptable to FTA as instructed thereby.

Sioux Area Metro (SAM) staff provides data to the City Transit Program Coordinator for the semi-annual Disadvantaged Business Enterprise (DBE) reporting. SAM staff submits a listing of all amounts paid to vendors. SAM staff identify which vendors were DBE contracting opportunities, which vendors were a certified DBE contractor, how many new vendors were

added during the semi-annual reporting period, and how many vendor contracts were closed during the reporting period. Sioux Area Metro staff provides the data in April and October of each year to allow City Transit Program Coordinator to complete the semi-annual report by June 1 and December 1 of each year. To ensure the data has been submitted, the City Transit Program Coordinator provides a reminder of the data needed during the first week of April and October and then a follow-up notice by the third week of April and October if the data has not been received.

City of Sioux Falls Finance staff provides data to the City Transit Program Coordinator for semi-annual DBE reporting in regard to any contractor or vendor that has FTA funding included in the contract. This information identifies which vendors are DBE contracting opportunities, which vendors were secured as a certified DBE contractor, how many new vendors were added during the semi-annual reporting period, and how many vendor contracts were closed during the reporting period. City of Sioux Falls Finance staff provides the data to the City Transit Program Coordinator in April and October of each year to allow the City Transit Program Coordinator to complete the semi-annual report by June 1 and December 1 of each year. To ensure the data is submitted, the City Transit Program Coordinator provides a reminder of the data needed during the first week of April and October and then a follow-up notice by the third week of April and October if the data has not been received.

Bidders List: 26.11(c)

The City of Sioux Falls will create a bidders list consisting of information about all DBE and non-DBE firms that bid or quote on DOT-assisted contracts. The purpose of this requirement is to allow use of the bidder's list approach to calculating overall goals. The bidder list will include the name, address, DBE, and non-DBE status of firms.

Collection of this information will be done by the inclusion of a notice in all solicitations and otherwise widely disseminated requests to firms quoting on projects to report directly to the City of Sioux Falls.

Section 26.13 Federal Financial Assistance Agreement

The City of Sioux Falls has signed the following assurances applicable to all DOT-assisted contracts and their administration.

Assurance: 26.13(a)

The City of Sioux Falls will not discriminate on the basis of race, color, national origin, or sex in the award and performance of any DOT-assisted contract or in the administration of its DBE program or the requirements of 49 CFR Part 26. The recipient shall take all necessary and reasonable steps under 49 CFR Part 26 to ensure nondiscrimination in the award and administration of DOT-assisted contracts. The recipient's DBE program, as required by 49 CFR Part 26 and approved by DOT, is incorporated by reference in this agreement. Implementation of this program is a legal obligation and failure to carry out its terms shall be treated as a violation of this agreement. Upon notification to the City of Sioux Falls of its failure to carry out its approved program, the Department may impose sanctions as provided for under Part 26 and may, in appropriate cases, refer the matter for enforcement under

18 U.S.C. 1001 and/or the Program Fraud Civil Remedies Act of 1986 (31 U.S.C. 3801 et seq.).

This language will appear in financial assistance agreements with subrecipients.

Contract Assurance: 26.13(b)

It is ensured that the following clause will be placed in every DOT-assisted contract and subcontract:

The contractor or subcontractor shall not discriminate on the basis of race, color, national origin, or sex in the performance of this contract. The contractor shall carry out applicable requirements of 49 CFR Part 26 in the award and administration of DOT-assisted contracts. Failure by the contractor to carry out these requirements is a material breach of this contract which may result in the termination of this contract or such other remedy as the City of Sioux Falls deems appropriate.

SUBPART B—ADMINISTRATIVE REQUIREMENTS

Section 26.21 DBE Program Updates

Since the City of Sioux Falls has received a grant of \$250,000.00 or more in FTA planning capital and/or operating assistance in a federal fiscal year, we will continue to carry out this program until all funds from DOT financial assistance have been expended. We will provide to DOT updates representing significant changes in the program.

Section 26.23 Policy Statement

The Policy Statement is on page 1 of this program.

Section 26.25 DBE Liaison Officer (DBELO)

We have designated the following individual as our DBE Liaison Officer:

Shawn Pritchett, Director of Finance
City of Sioux Falls
P.O. Box 7402
Sioux Falls, SD 57117-7402
spritchett@siouxfalls.org

In that capacity, the DBELO is responsible for implementing all aspects of the DBE program and ensuring that the City of Sioux Falls complies with all provisions of 49 CFR Part 26 when direct USDOT (FTA and FHWA) funding is received by the City. USDOT funding that is first received by South Dakota Department of Transportation (SDDOT) and then sub-allocated to the City of Sioux Falls shall coordinate all 49 CFR Part 26 regulations through the SDDOT DBE program. The DBELO has direct, independent access to the Mayor of Sioux Falls concerning DBE program matters. An organization chart displaying the DBELO's position in the organization can be found in Attachment I to this program.

The DBELO is responsible for developing, implementing, and monitoring the DBE program in coordination with other appropriate officials. The DBELO has one staff person (the Senior Accountant) to assist in the administration of the program. The duties and responsibilities include the following:

1. Gathering and reporting statistical data and other information as required by DOT.
2. Review of third-party contracts and purchase requisitions for compliance with the program.
3. Developing and setting overall annual goals.
4. Ensuring that bid notices and requests for proposals are available to DBEs in a timely manner.
5. Assuring that contracts and procurements include DBE goals in their solicitations.
6. Analyzing the City of Sioux Falls progress toward goal attainment and develops means for improvement.
7. Assuring the occurrence of and participating in pre-bid meetings.
8. Advising the Mayor and City Council on DBE matters and achievement.
9. Chairing the DBE Advisory Committee.
10. Attending pre-construction meetings.
11. Providing DBEs with information and assistance in preparing bids, obtaining bonding and insurance.
12. Planning and participating in DBE training seminars.
13. Acting as liaison to the Uniform Certification Process in South Dakota.
14. Providing outreach to DBEs and community organizations to advise of opportunities.
15. Acting as the source for the directory of certified DBEs for the City of Sioux Falls.

Section 26.27 DBE Financial Institutions

Per the state of South Dakota Department of Revenue, Economic Development, and State Treasurer, no financial institutions exist within South Dakota that qualify as disadvantaged.

Section 26.29 Prompt Payment Mechanisms

The City of Sioux Falls requires that all subcontractors performing work on DOT-assisted contracts be promptly paid for work performed pursuant to their agreements in accordance with all relevant federal, state, and local laws.

In accordance with 49 CFR §26.29, the City of Sioux Falls established a contract clause implementing this requirement and requires prime contractors to pay subcontractors for satisfactory performance of their contracts no later than 15 days from the prime contractor's receipt of each payment from the City of Sioux Falls.

The City of Sioux Falls ensures prompt and full payment of retainage from the prime contractor to the subcontractor within 30 days after the subcontractor's work is satisfactorily

completed. Pursuant to 49 CFR §26.29, the City of Sioux Falls has selected the following method to comply with this requirement:

- A. The recipient doesn't hold retainage from prime contractors and requires a contract clause obligating prime contractors to make prompt and full payment of any retainage to the subcontractor within 30 days after the subcontractor's work is satisfactorily completed.

Prompt Payment Dispute Resolution

The City of Sioux Falls will take the following steps to resolve disputes as to whether work has been satisfactorily completed for purposes of 49 CFR §26.29.

It is recommended that any meeting for the purpose of dispute resolution include individuals authorized to bind each interested party, including recipient representative(s) with authority to take enforcement action. The City of Sioux Falls has established, as part of its DBE program, the following mechanism(s) to ensure prompt payment and return of retainage:

- A. The recipient includes a contract clause providing that the prime contractor will not be reimbursed for work performed by subcontractors unless and until the prime contractor ensures that the subcontractors are promptly paid for the work they have performed.
- B. Other mechanisms, consistent with this part and applicable state and local laws, to ensure that DBEs and other contractors are fully and promptly paid include that the prime contractor must certify that all bills connected with the work have been paid and/or satisfied.

The City of Sioux Falls will include the following clause in each DOT-assisted prime contract:

The prime contractor agrees to pay each subcontractor under this prime contract for performance of its contract no later than 30 days after the satisfactory completion of his segment of the contract. The prime contractor further agrees to return retainage payments to each subcontractor within 15 days after the subcontractor's work is satisfactorily completed. Any delay or postponement of payment from the above-referenced time frame may occur only for good cause following written approval of the City of Sioux Falls. This clause applies to both DBE and non-DBE subcontracts.

If a subcontractor is not paid by the prime contractor, a claim may be presented to the DBELO. This claim if upheld is against money owed by the City of Sioux Falls to the prime contractor for the same project only.

Section 26.31 Directory

The state of South Dakota under the Unified Certification Program maintains a directory identifying all firms eligible to participate as DBEs. The directory lists the firm's name, address, phone number, email address, fax number date of most recent certification, and type of work certified to perform. The state of South Dakota makes available the amended directory at the official state website (SD.Gov) immediately upon any change. The City of Sioux Falls through its DBELO staff makes available the current directory via email at tfogarty@siouxfalls.org or fax. The Directory may be found as Attachment IV to this program document.

Section 26.33 Overconcentration

The City of Sioux Falls has not identified that overconcentration exists in any types of work that DBEs perform.

Section 26.35 Business Development Programs

The City of Sioux Falls has not established a business development program.

Section 26.37 Monitoring and Enforcement Mechanisms

The City of Sioux Falls will use the following monitoring and enforcement mechanisms to ensure compliance with 49 CFR Part 26:

1. The Department of Transportation will be advised of any false, fraudulent, or dishonest conduct in connection with the program in order for the DOT to take action deemed necessary for prosecution suspension or debarment as provided in 26.109.
2. The City will provide monitoring to verify that work committed to DBEs by the prime contractor is actually performed. This is done through auditing of weekly payroll submissions and on-site interviews with employees as required by Davis Bacon & Related Acts.
3. The City will verify total payments to DBEs involved through the required filing of Form C at the completion of the project.

Section 26.39 Fostering Small Business Participation

The City of Sioux Falls has created a small business element to structure contracting requirements to facilitate competition by small business concerns, taking all reasonable steps to eliminate obstacles to their participation, including unnecessary and unjustified bundling of contract requirements that may preclude small business participation in procurements as prime contractors or subcontractors. The small business element is incorporated as Subpart E to this DBE Program. The program elements will be actively implemented to foster small business participation.

To be an eligible DBE, a firm (including its affiliates) must be an existing small business, as defined by Small Business Administration (SBA) standards. As a recipient, you must apply current SBA business size standard(s) found in 13 CFR Part 121 appropriate to the type(s) of work the firm seeks to perform in DOT-assisted contracts, including the primary industry classification of the applicant.

Even if it meets the requirements of paragraph (a) of this section, a firm is not an eligible DBE for the purposes of Federal Highway Administration and Federal Transit Administration-assisted work in any federal fiscal year if the firm (including its affiliates) has had average annual gross receipts, as defined by SBA regulations (see 13 CFR 121.104), over the firm's previous three fiscal years, in excess of \$26.29 million. The Department will adjust this amount for inflation on an annual basis. The adjusted amount will be published on the Department's website in subsequent years.

SUBPART C—GOALS, GOOD FAITH EFFORTS AND COUNTING

Section 26.43 Set-Asides or Quotas

The City of Sioux Falls does not use quotas in any way relative to the DBE program.

Section 26.45 Overall Goals

Goal calculation and methodology is detailed in Attachment III to this program and is updated every three years as prescribed by the DOT (see Section 26.51(a-b) below). The goal will be submitted on August 1 of each third year. The next three-year period begins with federal fiscal year 2022.

The City of Sioux Falls will establish an overall DBE goal covering a three-year federal fiscal year period if it anticipates awarding DOT-funded prime contracts the cumulative total value of which exceeds \$250,000 in DOT funds during any one or more of the reporting fiscal years within the three-year goal period. In accordance with 49 CFR §26.45(f), the City of Sioux Falls will submit its overall three-year DBE goal to FTA by August 1 of the year in which the goal is due, as required by the schedule established by and posted to FTA's website.

Consultation and Publication

In establishing the overall goal, the City of Sioux Falls will provide for consultation and publication. This includes consultation with minority, women's and general contractor groups, community organizations, and other officials or organizations which could be expected to have information concerning the availability of disadvantaged and non-disadvantaged businesses, the effects of discrimination on opportunities for DBEs, and the efforts by the City of Sioux Falls to establish a level playing field for the participation of DBEs. The consultation will include a scheduled, direct, interactive exchange (e.g., a face-to-face meeting, video conference, teleconference) with as many interested stakeholders as possible focused on obtaining information relevant to the goal setting process, and it will occur before the City of Sioux Falls is required to submit the goal methodology to the operating administration for review pursuant to 49 CFR §26.45(f). The goal submission will document the consultation process in which the City of Sioux Falls engaged. Notwithstanding 49 CFR §26.45(f)(4), the proposed goal will not be implemented until this requirement is met.

Note: The persons or groups with whom this consultation occurred should be listed specifically in the goal methodology and calculation attachment.

In addition to the consultation described above, the City of Sioux Falls will publish a notice announcing the proposed overall goal before submission to FTA on August 1. The notice will be posted on the City of Sioux Falls official Internet website and may be posted in other sources (e.g., minority-focused media, trade association publications). If the proposed goal changes following review by FTA, the revised goal will be posted on the official Internet web site.

The overall three-year DBE goal submission to FTA will include a summary of information and comments received, if any, during this public participation process and the City of Sioux Falls' responses to those comments. The City of Sioux Falls will begin using the overall goal on October 1 of the relevant period, unless other instructions from FTA have been received.

Section 26.47 Failure to Meet Overall Goals

The City of Sioux Falls cannot be penalized, or treated by DOT as being in noncompliance with Part 26, because DBE participation falls short of an overall goal, unless the City of Sioux Falls fails to administer its DBE program in good faith.

The City of Sioux Falls understands that to be considered to be in compliance with Part 26, an approved DBE program and overall DBE goal, if applicable, must be maintained, and this DBE program must be administered in good faith.

The City of Sioux Falls understands that if the awards and commitments shown on the Uniform Report of Awards or Commitments and Payments at the end of any fiscal year are less than the overall goal applicable to that fiscal year, the following actions must be taken in order to be regarded by DOT as implementing this DBE program in good faith:

1. Analyze in detail the reasons for the difference between the overall goal and the awards and commitments in that fiscal year;
2. Establish specific steps and milestones to correct the problems identified in the analysis to enable the goal for the new fiscal year to be fully met;
3. The City of Sioux Falls will submit, within 90 days of the end of the fiscal year, the analysis and corrective actions developed under paragraphs (1) and (2) above to FTA for approval.

Section 26.49 Awards to Transit Vehicle Manufacturers (TVMs)

Awards to transit vehicle manufacturers (TVMs) will not be included in the City of Sioux Falls' overall goal calculation.

The City of Sioux Falls will require TVMs, as a condition of being authorized to bid or propose on any FTA-assisted transit vehicle procurements, to certify that they have complied with the requirements of §26.49.

1. The City of Sioux Falls affirms that only those TVMs listed on FTA's certified list of Transit Vehicle Manufacturers, or that have submitted a goal methodology to FTA that has been approved or has not been disapproved, at the time of solicitation are eligible to bid.
2. A TVM's failure to implement the DBE program in the manner as prescribed in 49 CFR §26.49 and throughout Part 26 will be deemed as noncompliance, which will result in removal from FTA's certified TVMs list, resulting in that TVM becoming ineligible to bid.
3. The City of Sioux Falls is aware that failure to comply with the requirements set forth in 49 CFR §26.49(a) may result in formal enforcement action or appropriate sanction as determined by FTA (e.g., FTA declining to participate in the vehicle procurement).
4. The City of Sioux Falls will submit, within 30 days of making an award, the name of the successful bidder and the total dollar value of the contract in the manner prescribed in the grant agreement.

The City of Sioux Falls may, with FTA approval, establish project-specific goals for DBE participation in the procurement of transit vehicles in lieu of complying through the procedures of 49 CFR §26.49.

Section 26.51(a) Contract Goals

Contract goals will be developed for individual nonconstruction projects or acquisitions due to the limited number of DBE firms within South Dakota available to be utilized relative to the operation of the transit system. The triennial goals dictated by FTA will apply to any construction projects supported by any federal DOT funds. All goals are anticipated to be fulfilled totally by race neutral means.

Section 26.51(b) Means Used to Meet Overall Goals

The City of Sioux Falls will meet the maximum feasible portion of its overall goal by using race-neutral means of facilitating race-neutral DBE participation. Race-neutral DBE participation includes any time a DBE wins a prime contract through customary competitive procurement procedures or is awarded a subcontract on a prime contract that does not carry a DBE contract goal.

Race-neutral means include, but are not limited to, the following:

1. Arranging solicitations, times for the presentation of bids, quantities, specifications, and delivery schedules in ways that facilitate participation by DBEs and other small businesses and by making contracts more accessible to small businesses, by means such as those provided under §26.39;
2. Providing assistance in overcoming limitations such as inability to obtain bonding or financing (e.g., by such means as simplifying the bonding process, reducing bonding requirements, eliminating the impact of surety costs from bids, and providing services to help DBEs, and other small businesses, obtain bonding and financing);
3. Providing technical assistance and other services;
4. Carrying out information and communications programs on contracting procedures and specific contract opportunities (e.g., ensuring the inclusion of DBEs, and other small businesses, on recipient mailing lists for bidders; ensuring the dissemination to bidders on prime contracts of lists of potential subcontractors; provision of information in languages other than English, where appropriate);
5. Implementing a supportive services program to develop and improve immediate and long-term business management, record keeping, and financial and accounting capability for DBEs and other small businesses;
6. Providing services to help DBEs, and other small businesses, improve long-term development, increase opportunities to participate in a variety of kinds of work, handle increasingly significant projects, and achieve eventual self-sufficiency;
7. Establishing a program to assist new, start-up firms, particularly in fields in which DBE participation has historically been low;
8. Ensuring distribution of the DBE directory, through print and electronic means, to the widest feasible universe of potential prime contractors; and

9. Assisting DBEs, and other small businesses, to develop their capability to utilize emerging technology and conduct business through electronic media.

Bidders, utilizing sub-contracts, on any DOT-funded projects and contracts must make sufficient good faith efforts to include DBE firms. These efforts may be evidenced by meeting the DBE participation or documenting efforts expended. Each bidder will provide, with his competitive bid paperwork, Form A, a listing of DBE utilized and percentage of the contract won, or Form B, a listing of the good faith efforts utilized to obtain DBE bids. Proof of efforts utilized are the listing of DBEs contacted, copies of letters sent to potential bidding DBEs, signed logs of phone calls made to potential bidding DBEs, and copies of faxes sent to potential bidding DBEs. Verification of all of these efforts is required to be enclosed with the sealed bid.

The City of Sioux Falls DBELO is responsible for determining if a bidder not meeting the goal has documented sufficient good faith efforts to be regarded as responsive or nonresponsive. No commitment will be made by the City to any bidder prior to confirmation that information is complete and accurate. Verification of offers to bid will be made by the DBELO via phone calls to a sample of DBEs listed on Form B submitted by the general contractor bidding.

Information to be submitted 26.53(b)

The City of Sioux Falls views a bidder as responsive or nonresponsive by his compliance with the required sufficient good faith efforts. All solicitations having a DBE goal require that bidders submit the following with their sealed bids:

1. Names and addresses of DBE firms participating in the contract.
2. A description of the work to be completed by each DBE.
3. The dollar amount of the segment to be completed by each DBE.
4. A written, signed document of commitment to utilize the DBE subcontractor.
5. A written, signed document of commitment from the DBE to be utilized on the contract.
6. Evidence of sufficient good faith efforts if the goal was not met.

Administrative Reconsideration 26.53(d)

Within ten days of being informed by the City of Sioux Falls that it was nonresponsive due to insufficient documentation of good faith efforts, a bidder may request administrative reconsideration. The bidder must make this request in writing to the reconsideration official:

Sam Trebilcock, Senior Planner
City of Sioux Falls
P.O. Box 7402
Sioux Falls, SD 57117-7402
strebilcock@siouxfalls.org

The reconsideration official does not have any role in the original determination of nonresponsiveness of the bidder in question. As a part of the reconsideration, the bidder will

have an opportunity to provide written documentation or argument concerning the issue of good faith efforts. The bidder will have the opportunity to meet in person with the reconsideration official to discuss the issue of whether the goal was met or if sufficient good faith efforts were documented. The reconsideration official will notify the bidder of his determination in writing. The result of the reconsideration process is not administratively appealable to the Department of Transportation.

Good Faith Efforts when a DBE is replaced on a contract 26.53(f)

The City of Sioux Falls requires that the DBELO be notified and provided reasonable documentation in the event a DBE is unable or unwilling to perform or otherwise terminated from a project. The general contractor will be required to perform sufficient good faith efforts to replace the nonperforming firm with another certified DBE to the extent needed to meet the contract goal.

The general contractor will be required to obtain our approval of the substitute, provide copies of new or amended subcontracts, and documentation of good faith efforts. In the event a general contractor fails or refuses to comply in the time specified, the contracting office will issue an order stopping all or part of payment and/or work until satisfactory action is taken. If the general contractor still fails to comply, the contracting officer may issue a termination for default proceeding.

Sample Bid Specification

The requirements of 49 CFR Part 26 apply to this contract. It is the policy of the City of Sioux Falls to practice nondiscrimination based on race, color, sex, or national origin in the award or performance of this contract. All firms qualifying under this solicitation are encouraged to submit bids. Award of this contract will be conditioned upon satisfying the requirements of this bid specification. These requirements apply to all bidders including those who qualify as a DBE. A DBE contract goal of ___ percent has been established for the contract. The bidder shall make sufficient good faith efforts as defined in Appendix A, 49 CFR Part 26 to meet the contract goal for DBE participation in the performance of this contract.

The bidder will be required to submit the following information: (1) the names and addresses of DBE firms that will participate in the contract; (2) a description of the work that each DBE firm will perform; (3) the dollar amount of the participation of each DBE firm participating; (4) written documentation of the bidder's commitment to use a DBE subcontractor whose participation it submits to meet the contract goal; and (5) written confirmation from the DBE that it is participating in the contract as provided in the commitment made under (4) and (5) above. If the contract goal is not met, evidence of good faith efforts made in the attempt to include DBE firms in the project will be submitted.

Section 26.55 Counting DBE Participation

DBE participation will count toward overall and contract goals as provided in 49 CFR 26.55.

SUBPART D—CERTIFICATION STANDARDS

Sections 26.61–26.73 Certification Process

The City of Sioux Falls will rely on the state of South Dakota to certify DBE firms under the Unified Certification Program.

SUBPART E—CERTIFICATION PROCEDURES

Section 26.81 Unified Certification Programs

The City of Sioux Falls is a member of a Unified Certification Program (UPC) administered by the state of South Dakota Department of Transportation and is limited to DBEs within the state of South Dakota. No coordination mechanisms exist with other regional recipients.

Monitoring Payments to DBEs

It is required that general contractors maintain records and documents of payments to DBEs for three years following the performance of the contract. These records will be made available for inspection upon request by an authorized representative of the City of Sioux Falls or DOT. This reporting requirement also extends to any certified DBE subcontractor.

Small Business Participation

It will be the policy of the City of Sioux Falls to facilitate the competition by small business concerns, to the greatest extent possible, in all contracts funded by any federal department. No goals will apply to this provision, but every effort will be utilized to provide contracting opportunities for small businesses. A small business will be defined by the latest Small Business Size Standards by Industry utilizing either annual receipts or total number of employees.

This policy is to be accomplished through the continued registration of qualified small business entities as developed according to the Housing and Urban Development (HUD) Section 3 Plan developed by the City of Sioux Falls. The small business firms in that list are confined to construction trades and are self-certified as dictated by HUD. The City of Sioux Falls registers any type of small business entities that will provide material, products, and services utilized in the operation of the transit system. No geographic area will be strictly defined as is done for the HUD small business involvement. It will be required that these firms furnish information pertaining to annual dollar receipts or employment levels to verify qualification as mandated by the federal DOT. This listing will be contacted via the U.S. Postal Service, fax, and email when available to announce upcoming opportunities for projects and the supply of goods and/or services to the City of Sioux Falls.

To the greatest extent possible, contracts, projects, and purchases covered by FTA funding specifically and all federal agencies generally will be prepared in such a manner to be handled or completed by small or very small business enterprises. Large projects and purchases will be segmented as much as possible to provide opportunities for small and very small business enterprises. Due to the predominance of small businesses within the state of South Dakota, there will be no provision for set-asides. These contracts, projects, and purchases will be

achieved on a 100 percent race-neutral basis and will apply to subrecipients as well as direct recipients in all instances. While no goals will be established, the City will maintain a record of participation of small and very small businesses. It is expected that bonding will not be required to be provided by subcontractors except in very select cases; in the event it is to be required, the limits are to be the value of the subcontracted work on that project.

The following methods will be used to further encourage small business participation with the City of Sioux Falls and Sioux Area Metro transit contracts and subcontracts during the 2022 and 2023 calendar years:

1. Work with the Small Business Administration on holding an annual small business and disadvantage training and workshop.
2. Add a DBE certification link to the City of Sioux Falls Purchasing webpage.
3. Continue to answer questions of small businesses about the DBE program including referral to the DBE certifying agencies (SDDOT and SBA). The City shall provide oversight of Sioux Area Metro to ensure that they are also encouraging small businesses to participate in the DBE program including methods to unbundle contracts to allow small businesses to bid on transit-related projects.

SUBPART F—COMPLIANCE AND ENFORCEMENT

Section 26.109 Information, Confidentiality, Cooperation, and Intimidation or Retaliation Information that may reasonably be regarded as confidential business information, consistent with federal, state, and local laws, will be safeguarded from disclosure to third parties. South Dakota's open records laws within SDCL 1-27 shall be followed with regard to any public records of this program.

Notwithstanding any provision of federal or state laws, information that may reasonably be construed as confidential business information will not be released to any third party without the written consent of the firm that submitted the information, including applications for DBE certification and supporting information.

All participants in DOT's DBE program are required to cooperate fully and promptly with DOT and recipient compliance reviews, certification reviews, investigations, and other requests for information. Failure to do so shall be grounds for appropriate action against the party.

The City of Sioux Falls contractor or any other participant in the program will not intimidate, threaten, coerce, or discriminate against any individual or firm for the purpose of interfering with any right or privilege secured by Part 26 or because the individual or firm has made a complaint, testified, assisted, or participated in any manner in an investigation, proceeding, or hearing under Part 26. The City of Sioux Falls understands that it is in noncompliance with Part 26 if it violates this prohibition.

ATTACHMENTS

Attachment I Finance Organizational Chart

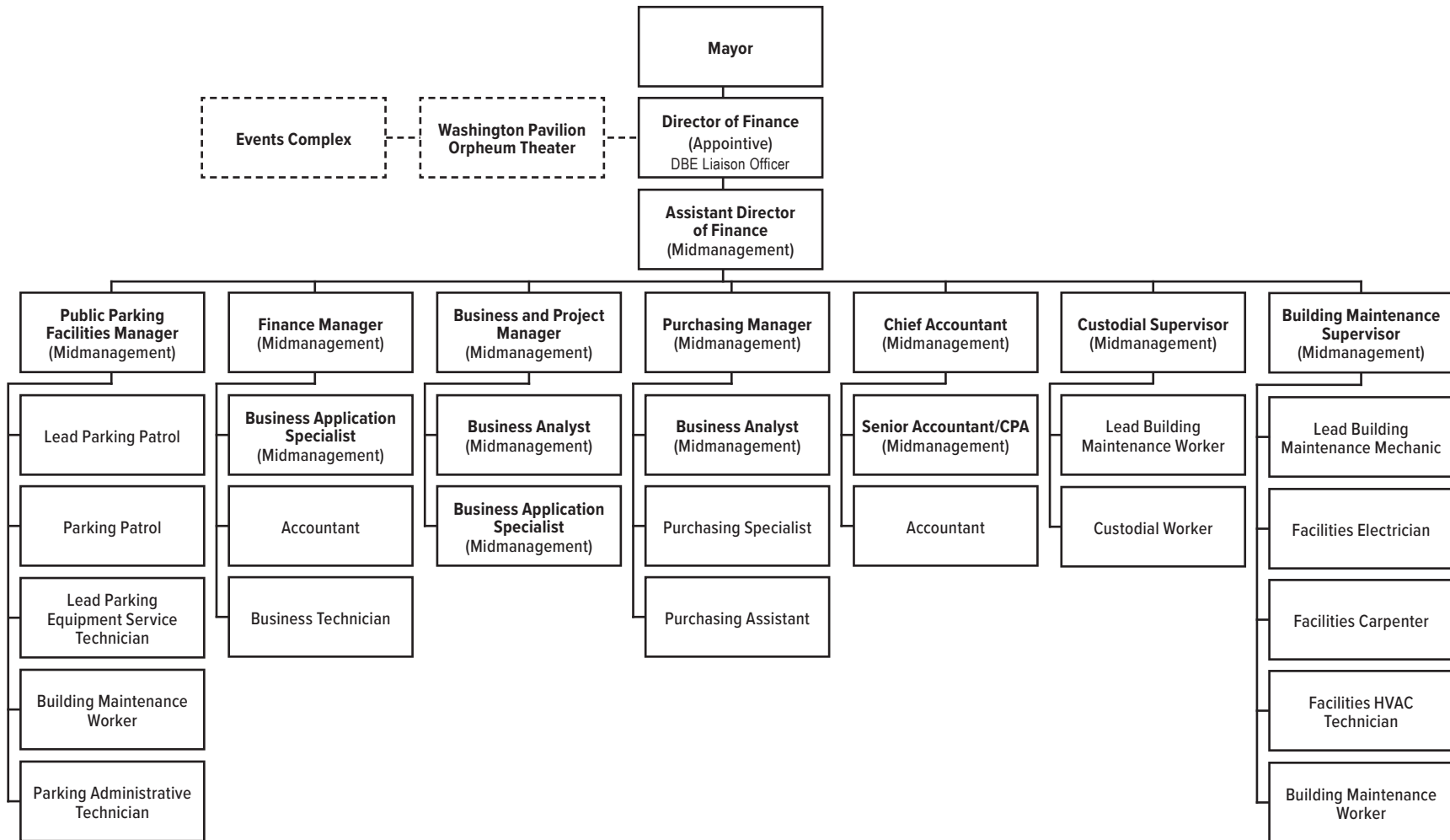
Attachment II Forms A and B

Attachment III Overall Goal Calculation

Attachment IV DBE Directory

CITY OF SIOUX FALLS

Finance Organizational Chart



Project No. _____

FORM A

City of Sioux Falls, SD
Schedule of DBE Participation

Form A or Form B shall be completed and submitted with the bid proposal. Failure to do so will cause the bid to be rejected.

Total Bid Amount = \$ _____

Name and Address of Subcontractor	Type of Work and Contract Items or Parts Thereof to be Performed	Dollar Amount of Subcontracted Work	DBE Percentage
TOTAL			

The undersigned intends to enter into a formal agreement with the DBE Contractors listed in this schedule conditioned upon notification of apparent low bid. Form A-1 must be completed for **each** subcontractor/vendor/supplier listed above and shall be given to the Project Owner for submittal to the Contract Compliance Specialist of the City of Sioux Falls **within 7 days** of the bid award date.

Authorized Signature _____
Title _____
Firm Name _____

Date _____

Project No.: _____ **Project Address:** _____

City of Sioux Falls, SD

DBE Good Faith Efforts Compliance Summary

This form shall be completed and submitted with the bid proposal if the DBE goal cannot be met.

Name and Address of Certified Disadvantaged Business Enterprise	Dates of Contact	Method of Contact	Documents Attached	Reason DBE was not used
Name				
Address				
Name				
Address				
Name				
Address				
Name				
Address				
Name				
Address				
Name				
Address				
Name				
Address				
Name				
Address				
Name				
Address				
Name				
Address				

Failure to accomplish and document good faith efforts may be cause for disqualification of this bid.

Bidder MUST attach documentation regarding the good faith efforts put forth.

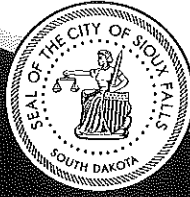
Documents may include copies of letters sent, advertisements used, unacceptable bid responses, etc.

Good faith efforts must show that the efforts could reasonably be expected to produce a level of DBE participation sufficient to meet the DBE goal of this project.

Authorized Signature: _____ Date: _____

Title: _____ Firm Name: _____

City of
Sioux Falls



Finance

Providing a Better Quality of Life for You!

224 West Ninth Street, P.O. Box 7402, Sioux Falls, SD 57117-7402
www.siouxfalls.org

FAX 605-367-8016
TTY/Hearing Impaired 605-367-7039

September 16, 2019

Ms. Morgan Hecht
Civil Rights Officer
12300 West Dakota Avenue, Suite 310
Lakewood, CO 80228-2583

Dear Ms. Hecht:

Enclosed please find the FY2020-2022 DBE and WBE utilization goals for the City of Sioux Falls for projects with financial assistance provided by the FTA for construction projects and procurement. The goal for FY2020-2022 is 1.38%.

The DBE goal for the City for FY2017-2019 was 0.73%. I've enclosed the methodology for reaching the FY2020-2022 goal. As has been the practice for the City, this goal is 100% race-neutral.

I look forward to working with you and developing a focused and effective DBE program for the City of Sioux Falls. If you have any questions or comments, please feel free to contact me.

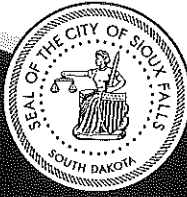
Respectfully,

A handwritten signature in cursive script, appearing to read "Barbara Suckstorf".

Barbara Suckstorf
DBELO

Enclosures

City of
Sioux Falls



Finance

Providing a Better Quality of Life for You!

224 West Ninth Street, P.O. Box 7402, Sioux Falls, SD 57117-7402
www.siouxfalls.org

FAX 605-367-8016
TTY/Hearing Impaired 605-367-7039

DISADVANTAGED BUSINESS ENTERPRISE PLAN

City of Sioux Falls, SD

Fiscal Years 2020, 2021, 2022

Determining the Base FTA-DBE Figure (49.26.45(c))

The following is a summary of the methodology used by the City of Sioux Falls to calculate the overall DBE goals for fiscal years 2020-2022.

- The DBELO met with purchasing and engineering staff to identify the contracting potential for fiscal years 2020-2022 of the Sioux Area Metro (SAM) transit system.
- There are no certified DBE firms providing fuel, parts, services, or materials for the day-to-day operations of the SAM transit system.
- Construction-related expenditures are the primary opportunity for the meeting DBE goals within the state.
 - Capital budget expenditures for the system during fiscal years 2020-2022 include SAM office remodeling and bus barn building updates. The engineer's estimate for these project are \$3,200,000.
 - In the past five years, there were four construction projects funded by FTA which resulted in zero participation by certified DBE firms. In each case, the awarded bidder performed sufficient good faith efforts to involve DBE firms providing the required types of work.

NAICS codes were identified and the 2016 County Business Pattern information provided by the US Census Bureau was utilized for determining the number of firms located within the designated geographic area. The City designated a 22-county area of South Dakota with four classifications surveyed. All four categories appear too small for further breakdown.

The DBE directory from the South Dakota Department of Transportation was utilized to establish the number of certified DBE firms available.

The capital budget available for SAM DBE opportunities was weighted according to the percentage of dollars being spent for construction, services, and supplies.

The City won't be including an adjustment for past participation and recommends setting the overall DBE goal for fiscal years 2020-2022 at 1.38%. This goal was reached by compiling data from a 22-county area in and around Sioux Falls. Data from the following 2017 NAICS codes were utilized: 23 (Construction), 44-45 (Retail Trade), 54 (Professional, Scientific, and Technical Services), and 81 (Other Services). The number of certified

Finance and Budget 605-367-8860 • Purchasing 605-367-8013

DBE firms was then divided by the total in each category to achieve a weighted percentage. The weighted percentages were then added to achieve the 1.38% goal.

The City of Sioux Falls will post the 1.38% goal on the City's web site: www.siouxfalls.org. The goal will be effective FY 2020-2022.

Reorganizing the DBELO position to the purchasing department has increased opportunities for sourcing DBE suppliers. City technological advances will aid by providing access and outreach opportunities to DBE firms and open up opportunities outside of the established 22-county area when meeting goals.

DBELO will continue to do the following to meet goals:

- Advertise DBE projects in the local media, City's web site, and electronic bidding and plan distribution sites as applicable;
- Promote certified DBE directory to prime contractors;
- Identify new opportunities to identify, develop, and assist potential DBE businesses;
- Network with new vendors, businesses, and agencies to promote business opportunities within the 22-county demographic area, and
- Be highly critical of good faith efforts on DBE projects to ensure every effort is being made to solicit DBE firms.

2017 NAICS Codes	23 Construction	44-45 Retail Trade	54 Professional, Scientific, and technical services	81 Other Services (except public administration)	
COUNTY					
Aurora	11	8	6	8	
Beadle	63	81	26	70	
Bon Homme	12	25	5	25	
Brookings	111	119	73	103	
Brule	23	37	14	25	
Charles Mix	31	47	10	40	
Clark	20	13	8	14	
Clay	32	47	19	39	
Grant	33	47	15	33	
Gregory	25	34	10	23	
Hamlin	59	17	8	15	
Hutchinson	25	42	10	34	
Jerauld	11	7	6	9	
Kingsbury	23	23	6	25	
Lincoln	272	140	113	147	
McCook	23	25	11	26	
Miner	7	12	5	11	
Minnehaha	638	823	501	536	
Moody	25	19	11	19	
Sanborn	13	4	6	8	
Turner	45	33	18	35	
Union	46	45	45	33	
TOTALS	1548	1648	926	1278	
Certified DBE 9/13/19	23	0	4	0	
Weighted Percentage	0.9	0	0.1	0	
	1.34	0.00	0.04	0	1.38

Step One

$$(.9(23/1548)+.1(4/926))\times 100=1.38\%$$

South Dakota Department of Transportation
 Roster of Certified DBE Firms - - Highway construction

Highway Work

Firm Name / Address	Contact Name Phone	B N D Work Area	M B E MW B E WW B E	NAICS	Services Performed
1st Resource Solutions, LLC 1916 W Wilno Dr Marion IN 46952	Jeffrey Terry Phone: (765)618-8800 Fax: (888)499-1527 Email: jterry@1stresourcesolutions.com DBE - Y ACDBE - N	N Statewide	Y	423390	Construction materials Supplier - concrete accessories Supplier - drain tiles
A & L Contractors, LLC PO Box 1012 Spearfish SD 57783-7012	Linda Williamson Phone: (605)642-3305 Fax: (605)642-7323 Email: aandlcontractors@gmail.com DBE - Y ACDBE - N	N West of Missouri River	Y	237110 237310 238910 238990 484220 488490	Grading Sewer and water lines installation Site preparation Snow removal Earthwork Excavation Concrete Flatwork (sidewalks, approaches, bike paths) Hauling - gravel, sand, dirt, rock
All Phase Contracting, Inc. 9652 152nd Ave NE Forest Lake MN 55025	Mary Ann Jay Phone: (651)462-7232 Fax: (651)784-3609 Email: info@apcwbe.com DBE - Y ACDBE - N	N Statewide	Y	212321 237310 237990 238910 484220 484230 562111	Excavation Erosion Control Site preparation Concrete - Flat work & Curb repair Noise Wall & Retaining Wall Construction Ground Stabilization using Helicals Removals Excavation & Aggregate Placement Trucking - heavy equipment hauling Supplier - Sales of select granular, Class5 & Rip Rap

South Dakota Department of Transportation
 Roster of Certified DBE Firms - - Highway construction

Highway Work

Firm Name / Address	Contact Name	B N D	Work Area	M B E	MW B E	WW B E	NAICS	Services Performed
AllSource Construction Supply PO Box 1800 Gresham OR 97030	Debbie Rockway	N	Statewide			Y	423320 423330 423390 423610 423710 423720 423840 424690 444190 532412 532490	Supplier - dowel bars and assemblies Supplier - First Aid Products Supplier - Curing blankets Supplier - Concrete chemicals Supplier - Snapties & Tie wire Supplier - Rebar support & Rebar Connections Supplier - Vapor Barrier Supplier - Jobsite lighting, ladders, utility carts Supplier - Jobsite Safety Equipment
American Construction Supplies, Inc. 2373 60th Avenue Osceola WI 54020	Melissa Thiel	N	Statewide			Y	423320 423390 423810 424690 424720 424990	Supplier - concrete sealants Supplier - dowel bars and assemblies Supplier - concrete accessories Supplier - erosion control materials Supplier - concrete cure Supplier - concrete expansion joint material Supplier - silt fence Supplier - Concrete cloth Supplier - Stucco/Stone materials and accessories
Aura Fabricators, Inc. PO Box 755 Dalton MN 56324	Jasmine Sonmor	N	Statewide			Y	332312 332322 332323 423510	Manufacturer - Structural Steel, ornamental railing, bearings Manufacturer - Diaphragms, expansion joints Manufacturer - Misc. metal work fabrication and manufacturing
B & R Project Management, Inc. 7192 S Perth St Aurora CO 80016	Barbara Coleman	N	statewide			Y	236220 237110 237310 237990 238290 238990	Construction management Baggage handling/conveyor systems Contract administration Construction cleanup

South Dakota Department of Transportation
 Roster of Certified DBE Firms - - Highway construction

Highway Work

Firm Name / Address	Contact Name Phone	B N D Work Area	M B E MW B E WW B E NAICS	NAICS	Services Performed
Bear Creek Contracting, Inc. 7156 E. Lake Carlos Drive NE Carlos MN 56319	Leslie Cavers Phone: (320)815-3070 Fax: (320)759-3071 Email: leslie@bearcreekonline.com DBE - Y ACDBE - N	N Statewide	Y	237310 238990	Concrete pavement misc - saw, seal, grind, joint and spall repair Curb and gutter Concrete - Flatwork (sidewalks)
Boys Contracting, LLC DBA Water Products 34876 US Hwy 169 LeSueur MN 56058	Kathryn Boys Phone: (507)665-5119 Fax: () - Email: kathy@boyswaterproducts.com DBE - Y ACDBE - N	N East of Missouri River	Y	423390	Broker - Water, sewer and storm sewer supplies
Burchatz Construction Co., Inc. 1700 1st Ave SW Watertown SD 57201-3001	Sharon Burchatz Phone: (605)882-2867 Fax: (605)886-9122 Email: bcco10@qwestoffice.net DBE - Y ACDBE - N	N 300 Mile Radius/East of	Y	237310 238990	Concrete - Drop Inlets Curb and gutter Concrete - Flatwork (sidewalks, driveways, drive aprons) Concrete - Flatwork (pavement)
Carlo Lachmansingh Sales, Inc. 4801 4th Ave S Minneapolis MN 55419	Carlo Lachmansingh Phone: (612)827-2211 Fax: (612)821-0161 Email: Carlo@carloelectrical.com DBE - Y ACDBE - N	N Statewide	Y	423610	Supplier - electrical

South Dakota Department of Transportation
 Roster of Certified DBE Firms - - Highway construction

Highway Work

Firm Name / Address	Contact Name Phone	B N D	Work Area	Highway Work			NAICS	Services Performed
				M B E	MW B E	WW B E		
Carolina Construction Supplies, LLC 1349 Hamlin Road Mt. Pleasant SC 29466	Victoria Volponi Phone: (803)931-6660 Fax: () - Email: vicki@ccs-dbe.com DBE - Y ACDBE - N	N	Statewide			Y	423390 424610 425120	Supplier - dowel bars and assemblies Supplier - concrete cure Supplier - concrete expansion joint material Supplier - Tie Bar Baskets and Loose Tie Bars Supplier - Backer Rod Supplier - Basket Stakes Supplier - Dowel Caps Supplier - Wire Mesh Supplier - Epoxy and Grout Disc
Concrete Dakota Redi Mix, Inc. 1004 4th St SE Watertown SD 57201	Terra Jacobson Phone: (605)886-3434 Fax: (605)886-3449 Email: concretedakota@gmail.com DBE - Y ACDBE - N	N	45 miles of Watertown			Y	327320	Concrete Ready Mix Manufacturer/Supplier
Connico Incorporated 2594 N. Mt. Juliet Rd Mount Juliet TN 37122	Chisty Shadowens Phone: (615)758-7474 Fax: () - Email: dbe@connico.com DBE - Y ACDBE - N	N	Statewide			Y	236220 541330 541611 541990	Consultant engineering Project management Contract administration Cost estimating, scheduling, independent fee analysis
Contractor Services, Inc. PO Box 1306 North Platte NE 69103	Rocky Torres Phone: (308)221-2372 Fax: (308)221-2572 Email: eddie@csittraffic.com DBE - Y ACDBE - N	N	Southern SD			Y	237310 488490 561990	Signing Traffic Control Pavement marking Flagging/Pilot Car Striping - Temporary & Permanent

South Dakota Department of Transportation
 Roster of Certified DBE Firms - - Highway construction

Highway Work

Firm Name / Address	Contact Name Phone	B N D	Work Area	Highway Work			NAICS	Services Performed
				M B E	MW B E	WW B E		
Courtland LLC dba Courtland Construction Supplies PO Box 217 Hamel MN 55340	Julia Espey Hornback Phone: (763)567-2172 Fax: (612)435-4158 Email: juliaespey@courtlandllc.net DBE - Y ACDBE - N	N	statewide				Y 423320 423330 423510 424690 424950 424990	Supplier - concrete sealants Supplier - dowel bars and assemblies Supplier - paint Supplier - concrete accessories Supplier - erosion control materials Supplier - concrete cure Supplier - concrete expansion joint material Supplier - Rebar materials Supplier - roofing supplies
Crowley Construction Corp. 1353 N. 68th Street Milwaukee WI 53213	Bessie Crowley Phone: (414)257-2141 Fax: (414)257-2141 Email: bcrowley@wi.rr.com DBE - Y ACDBE - N	N	Statewide				Y 237310	Pavement marking/Striping - Airports & runways
D & G Concrete Construction, Inc. 1408 E 39th St N Sioux Falls SD 57104-0835	Gregory Branaugh Phone: (605)338-8597 Fax: (605)338-9502 Email: greg@dgconcrete.com DBE - Y ACDBE - N	N	In SD 100 miles of Siou	Y			237310	Concrete - flatwork Paving - portland cement concrete
Dakota Constructors PO Box 542 Harrisburg SD 57032	Warren Barse Phone: (605)368-2500 Fax: (605)368-2552 Email: warrenbarse@hotmail.com DBE - Y ACDBE - N	N	Statewide	Y			212321 237310	Grading Manufacturer - crushed gravel Earthwork Excavation

South Dakota Department of Transportation
 Roster of Certified DBE Firms - - Highway construction

Highway Work

Firm Name / Address	Contact Name Phone	B N D	Work Area	Highway Work			NAICS	Services Performed
				M B E	MW B E	WW B E		
Dakota Excavating, Inc. 11864 455th Ave Sisseton SD 57262	Courtney Mussetter Phone: (605)268-0241 Fax: (605)534-1026 Email: dakotaexcinc@gmail.com DBE - Y ACDBE - N	N	Statewide				484220	Hauling - gravel, dirt, materials
Dakota Prairie Landscapes LLC 16768 Hwy 1416 NEW UNDERWOOD SD 57761	Sherri Steffen Phone: (605)754-9372 Fax: (605)754-6141 Email: emailpl@goldenwest.net DBE - Y ACDBE - N	N	Western SD				237310 561730	Erosion Control Landscaping Commercial Landscaping Pipe Slip Lining (cellular concrete & extrusion welding)
Damel Transportation & Logistics, Inc. 3412 4th St NW Austin MN 55912	Danielle Morem Phone: (507)434-4088 Fax: (507)434-2443 Email: danielle@dameltransport.com DBE - Y ACDBE - N	N	Eastern SD				484220	Hauling - Asphalt, gravel, rock, sand Hauling - Hopper bottom for Agriculture Freight Brokering Freight Management
Decorative Concrete Designs, Inc. 590 1st Street East Horace ND 58047-4531	Shari Enno Phone: (701)277-1687 Fax: (701)277-3133 Email: dcdinc590@gmail.com DBE - Y ACDBE - N	N	statewide				327390	Supplier - ADA detectable warning panels
Dixie Veurink Trucking 3020 S Ohlman Mitchell SD 57301-2938	Dixie Schladweiler Phone: (605)996-1163 Fax: (605)996-1163 Email: dixie@santel.net DBE - Y ACDBE - N	N	statewide				484220	Hauling - gravel, dirt, materials Gravel crushing Riprap

**South Dakota Department of Transportation
 Roster of Certified DBE Firms - - Highway construction**

Highway Work

Firm Name / Address	Contact Name	B N D	Work Area	M B E	MW B E	WW B E	NAICS	Services Performed
Dormark Construction Co Inc PO Box 530 Grimes IA 50111-0530	James Bayse	N	statewide	Y			237310 238110 238120 238990	Dowel basket/rebar placement Sawing & sealing joints and cracks Concrete barrier rail Concrete - Flatwork (sidewalks, driveways, drive aprons) Flowable Mortar
Doug O'Bryan Contracting, Inc. 21617 US Hwy 18 Martin SD 57551	Doug O'Bryan	N	statewide	Y			236220 237110 237310 327320	Building construction and remodeling Concrete - Drop Inlets Concrete - flatwork Excavation Sewer and water lines installation Site preparation Hydro-seeding
Eastern Dakota Specialties LLC 47550 233 A St. Egan SD 57024-6424	Cindy Loiseau	N	statewide			Y	237310 238990	Fencing Erosion Control
Full Moon Enterprises LLC 2323 Minnesota Ave Billings MT 59101	Lucille Mooney	N	West River			Y	238110 238390 423320	Supplier - geogrid / geotextile fabric Shotcrete Contractor Supplier - Concrete cloth
Ghost Bear Contracting, Inc. PO Box 260 Oglala SD 57764-0260	Calvin Ghost Bear	N	Western half of SD	Y			238910 484220	Concrete - flatwork Hauling - gravel, dirt, materials Site preparation Underground Utilities - (gas, fiber optics, power, & water lines)

South Dakota Department of Transportation
 Roster of Certified DBE Firms - - Highway construction

Highway Work

Firm Name / Address	Contact Name Phone	B N D Work Area	M B E	MW B E	WW B E	NAICS	Services Performed
Glacial Lakes Erosion Control LLC 5525 7th Ave SW Watertown SD 57201	Jennifer Davis Phone: (605)520-4209 Fax: (605)886-8234 Email: glec08@yahoo.com DBE - Y ACDBE - N	N Northeast SD	Y			237310	Erosion Control Seeding
Global Electrical Inspector Consultants dba Global 2301 Research Park Way, Suite 151 Brookings SD 57006	George Posey Phone: (763)325-5438 Fax: () - Email: george.posey@globalsynergypowers.com DBE - Y ACDBE - N	N Statewide	Y			238210	Electrical - roadway lighting Electrical Contractor Electrical - traffic signal installation
Grangaard Construction, Inc. 705 20th Ave SW Watertown SD 57201	Yancey Grangaard Phone: (605)886-0559 Fax: () - Email: gcinc@wat.midco.net DBE - Y ACDBE - N	N statewide	Y			237310	Box culverts Bridge construction Grading
Guardrail Enterprises, Inc. 46233 269th Street Chancellor SD 57015	Karen Leisinger Phone: (605)526-4445 Fax: (605)526-4332 Email: totaltill@unitelsd.com DBE - Y ACDBE - N	N 200 miles of Sioux Falls	Y			237310 238990	Fencing Erosion Control Guardrail Seeding
Guytec Steel, Inc. 1106 Wyckoff Avenue Ridgewood NY 11385	Casel Sattar Phone: (718)821-3500 Fax: (718)821-3700 Email: bob@guytecsteel.com DBE - Y ACDBE - N	N Statewide	Y			238120 238390 332312	Structural steel erection Iron work contractors Ceiling, metal, installation Manufacturer - Fabricated structural metal Manufacturer - Structural steel, fabricated

South Dakota Department of Transportation
 Roster of Certified DBE Firms - - Highway construction

Highway Work

Firm Name / Address	Contact Name Phone	B N D	Work Area	Highway Work			NAICS	Services Performed
				M B E	MW B E	WW B E		
HanSon Custom Crushing, Inc. 20280 Enfield Ct. N. Forest Lake MN 55025	Joelynnne Hanson Phone: (651)982-1032 Fax: (651)982-1354 Email: joelynnne@hccirocks.com DBE - Y ACDBE - N	N	Statewide				212321 237310 238910 423320	Recycling Asphalt and Concrete Materials Crushing and Screening of Rock Limestone Sand Gravel and other Aggregate Materials Removal and Demolition
High Plains Materials, Inc. PO Box 4008 Rapid City SD 57709-4008	Johnna Clemmons Phone: (605)348-6250 Fax: (605)348-1965 Email: highplainsmaterials@gmail.com DBE - Y ACDBE - N	N	Statewide				212321	Supplier - aggregates Loading/stockpiling aggregates
I & A Construction, LLP 1416 Pierce Street Sioux City IA 51105	Marcelina Cockburn Phone: (712)224-9050 Fax: (712)587-6416 Email: iandaconstruction2013@gmail.com DBE - Y ACDBE - N	N	Statewide	Y			237110 237310 238110	Concrete - flatwork Sewer and water lines installation Retaining walls Curb and gutter Concrete paving
Innova Technologies 1432 South Jones Blvd. Las Vegas NV 89146	Carlos Banchik Phone: (702)220-6640 Fax: (702)220-7740 Email: mbbohall@innovanv.com DBE - Y ACDBE - N	N	Statewide	Y			541330	Civil engineering Environmental Engineering
Innovative Trenchless Solutions, Inc. 32783 Little Owl Rd. Vergas MN 56587	Sarah Strom Phone: (701)361-3178 Fax: () - Email: sarah.its@aol.com DBE - Y ACDBE - N	N	Statewide			Y	423390	Supplier- underground pipe rehab/soil stabilization products

South Dakota Department of Transportation
 Roster of Certified DBE Firms - - Highway construction

Highway Work

Firm Name / Address	Contact Name Phone	B N D Work Area	M B E MW B E WW B E NAICS	NAICS	Services Performed
Interstate Sealant & Concrete, Inc. S40 W24211 Rockwood Way Waukesha WI 53189	Cheryl Sment Phone: (262)547-6316 Fax: (262)547-6844 Email: csment@interstatealant.com DBE - Y ACDBE - N	N statewide	Y	237310 238990	Sawing & sealing joints and cracks Spall repair Epoxy crack injection
J. Johnson Trucking, LLC PO Box 216 Wall SD 57790	Jason Johnson Phone: (605)685-3033 Fax: () - Email: blueearthbucs95@gmail.com DBE - Y ACDBE - N	N Statewide	Y	484220	Hauling - gravel, dirt, materials Trucking Hauling - Asphalt Hauling - Cattle
J.R. Dawsen Construction, Inc. 12178 Riverview Drive Sidney MT 59270	Jacquelyn Baltrusch Phone: (406)478-0991 Fax: () - Email: jacki@jrdawsen.com DBE - Y ACDBE - N	N Northern half of SD	Y	444190 484220 484230	Supplier - Rebar materials Hauling - Asphalt Hauling - gravel, sand, dirt, rock Supplier - Geofabrics
JJ Bulk 3900 N. National Ave. Sioux Falls SD 57104	Jody Parsons Phone: (605)941-3115 Fax: (605)356-8076 Email: jodyparsons10@yahoo.com DBE - Y ACDBE - N	N Statewide	Y	493190	Supplier - rental storage trailers for fly ash storage
Kirk Barnes Construction, Inc. PO Box 656 Valentine NE 69201-0656	Kirk Barnes Phone: (402)376-2723 Fax: (402)376-3013 Email: cc@kbconst.com DBE - Y ACDBE - N	N statewide	Y	237310	Box culverts Fencing Erosion Control Seeding

South Dakota Department of Transportation
 Roster of Certified DBE Firms - - Highway construction

Highway Work

Firm Name / Address	Contact Name Phone	B N D	Work Area	Highway Work			NAICS	Services Performed
				M B E	MW B E	WW B E		
Koppel Fabrication, Inc. 10262 Hwy 127 Sweet Springs MO 65351	Carrie Guier Phone: (660)335-4601 Fax: (660)335-0114 Email: carrie@koppelfab.com DBE - Y ACDBE - N	N	Statewide			Y	237310 332323	Manufacturer - Bridge railing/guardrail Manufacturer - Pedestrian handrailing
Lakota Source L.L.C. 17041 229th St. Owanka SD 57767	Del Maynard Phone: (605)798-2149 Fax: () - Email: lakotasourcellc@gwtc.net DBE - Y ACDBE - N	N	Statewide			Y	115112 115310 237310 238990 541370	Fencing Erosion Control Herbicide Applicator Tree planting GPS & GIS mapping
Laura A. Wiedewitsch Trucking, LLC PO Box 106 Vale SD 57788-0106	Laura Wiedewitsch Phone: (605)490-5644 Fax: () - Email: wied28@yahoo.com DBE - Y ACDBE - N	N	Statewide			Y	484220	Hauling - gravel, dirt, materials Hauling - Asphalt
Lawn & Driveway Service Inc 44725 175th St Morris MN 56267	Vicky Dossdall Phone: (320)760-9112 Fax: (320)795-2119 Email: lawnanddriveway@runestone.net DBE - Y ACDBE - N	N	Statewide			Y	423390	Supplier - dowel bars and assemblies Supplier - geogrid / geotextile fabric Supplier - erosion control materials Supplier - metal pipe culverts Supplier - silt fence Supplier - Rebar materials
Louis-Company, LLC PO Box 350 Grain Valley MO 64029	Rachelle Valencia Phone: (816)400-9099 Fax: () - Email: hq@louiscompany.net DBE - Y ACDBE - N	N	Statewide			Y	237310	Epoxy bridge deck overlay Bridge deck repair Epoxy Polymer Overlays High Friction Surface Treatment

South Dakota Department of Transportation
 Roster of Certified DBE Firms - - Highway construction

Highway Work

Firm Name / Address	Contact Name Phone	B N D Work Area	M B E	MW B E	WW B E	NAICS	Services Performed
Martinez Geospatial, Inc. 2915 Waters Road Ste 100 Eagan MN 55121	John Eichten Phone: (651)686-8424 Fax: (651)686-8389 Email: john@mtzgeo.com DBE - Y ACDBE - N	N statewide	Y			518210 541330 541370 541511 541512 541513 541614 541922 561499	Photogrammetric aerial mapping Digital orthophotos GIS support services Topographic & planimetric mapping & data collection 2D and 3D modeling and visualization

South Dakota Department of Transportation
 Roster of Certified DBE Firms - - Highway construction

Highway Work

Firm Name / Address	Contact Name	B	M	MW	WW	NAICS	Services Performed	
	Phone	N	B	B	B			
	D	Work Area	E	E	E			
Mid States Rebar and Supply, Inc. 3221 73rd Street Atkins IA 52206	Anne Duffield	N	Statewide			Y	237110 237310 237990 238120 238910 238990 331110 331221 332312 423390 423510 423930 424310 424610 424690 561730 561990	Bridge construction Concrete - Drop Inlets Supplier - concrete sealants Erosion Control Traffic Control Manufacturer - reinforcing steel and tie bars Concrete demolition Guardrail Landscaping Retaining walls Supplier - dowel bars and assemblies Clearing & grubbing Bridge railings Supplier - guard rail and accessories Curb and gutter Supplier - ADA detectable warning panels Concrete barrier rail Supplier - concrete accessories Supplier - erosion control materials Supplier - reinforcing steel and epoxy Supplier - concrete cure Supplier - concrete expansion joint material Concrete paving Supplier - Rebar materials Manufacturer - Bridge railing/guardrail Concrete - Flatwork (sidewalks, driveways, drive aprons) Concrete - Flatwork (pavement) Storm Sewer Reinforcing Steel Installation
Midwest Borings, Inc. PO Box 38 Santiago MN 55377	Lynnette Schillewaert	N	Statewide			Y	237110 237990 238910 423390	Supplier - Steel Casing, Pipe and Related Materials Horizontal Drilling, Tunneling, Boring Services, and Jacking

South Dakota Department of Transportation
 Roster of Certified DBE Firms - - Highway construction

Highway Work

Firm Name / Address	Contact Name Phone	B N D	Work Area	Highway Work			NAICS	Services Performed
				M B E	MW B E	WW B E		
Midwest Marketing LLC 125 Main St. Rapid City SD 57701	Dawn Claymore Phone: (605)716-5666 Fax: () - Email: dawn@mwmsd.com DBE - Y ACDBE - N	N	Statewide				541810 541820	Advertising and public relations
Murdock Electric, Inc. PO Box 1541 Pine Ridge SD 57770-1541	Carrie Murdock Phone: (605)867-5759 Fax: (605)867-5359 Email: carrie@murdockelectric.com DBE - Y ACDBE - N	N	statewide	Y			238210	Electrical contracting - buildings Electrical - roadway lighting
Muscha Pavement Marking, Inc. 16545 70th St SE Colfax ND 58018	Kelly Muscha Phone: (701)372-3690 Fax: (701)372-3427 Email: mpm@rrt.net DBE - Y ACDBE - N	N	statewide			Y	488490 488999	Grooving for pavement marking Pavement marking Rumble strips
Northern Construction Supplies, LLC 8215 44th St. NE Bismarck ND 58503	Lance Allard Phone: (701)240-9327 Fax: () - Email: lance@northernconstructionsupplies.com DBE - Y ACDBE - N	N	Statewide	Y			423320 423390 423510 423610 423840	Supplier - dowel bars and assemblies Supplier - concrete cure Supplier - rebar & rebar supports Supplier - concrete blades Supplier - ground stabilization materials Supplier - underground supplies Supplier - epoxy
Northern Engineering & Consulting, Inc. 2216 Tod Court Northwest Bemidji MN 56601	Lisa Gladstone Phone: (218)444-4860 Fax: (218)444-6042 Email: info@neciusa.com DBE - Y ACDBE - N	N	Statewide	Y			541330 541370	Consultant engineering Construction management Land surveying Transportation planning Survey & design - highways, streets and parking lots Survey & design - water distribution and drainage Right-of-way maps and plats

South Dakota Department of Transportation
 Roster of Certified DBE Firms - - Highway construction

Highway Work

Firm Name / Address	Contact Name Phone	B N D	Work Area	Highway Work			NAICS	Services Performed
				M E	MW E	WW E		
Northstar Erosion Control, Inc. 828 W. Central Ave. Bismarck ND 58501-1308	Brenda Lewis Phone: (701)425-9775 Fax: () - Email: brendalewis@northstarerosion.com DBE - Y ACDBE - N	N	Statewide			Y	237310 561730	Erosion Control Seeding Hydro-seeding
O'Rourke / Badlands Enterprises LLC PO Box 392 Porcupine SD 57772	Samuel O'Rourke Phone: (605)685-8703 Fax: (605)867-8703 Email: badlandsenterprises@goldenwest.net DBE - Y ACDBE - N	N	West River			Y	236115 236118 237110 237310 238110 238910 238990 484220 562991	Concrete - flatwork Excavation Fencing Hauling - gravel, dirt, materials Sewer and water lines installation Site preparation Septic systems Curb and gutter Residential construction and remodeling Concrete - footings and foundations
Precision Mechanical PO Box 1211 Rapid City SD 57709	William Hamley Phone: (605)341-7618 Fax: (605)341-7619 Email: deannab@precisionmech.biz DBE - Y ACDBE - N	N	West River			Y	238220	HVAC - Commercial/Residential installation and servicing
Princess Trucking, Inc. 3841 192nd LN NW Oak Grove MN 55303	Tyra Beckers Phone: (612)817-8714 Fax: () - Email: tyra@princesstruck.com DBE - Y ACDBE - N	N	Statewide			Y	484220 488490	Pilot car Trucking

South Dakota Department of Transportation
 Roster of Certified DBE Firms - - Highway construction

Highway Work

Firm Name / Address	Contact Name Phone	B N D Work Area	M B E MW B E WW B E NAICS	NAICS	Services Performed
Project Solutions, Inc. 505 Kansas City Street RAPID CITY SD 57701	Sandra Burns Phone: (605)737-0377 Fax: (605)355-6961 Email: sandy@projectsolutionsinc.com DBE - Y ACDBE - N	N statewide	Y	541330 541611	Consultant - business, management Construction inspection Specialty staffing
Quality Dirtworks, LLC PO Box 164 Max ND 58759	Melissa Schneider Phone: (701)240-2896 Fax: () - Email: info@qualitydirtworksllc.com DBE - Y ACDBE - N	N Statewide	Y	221320 237110 237310 238220 238910 484220	Grading Sewer and water lines installation Erosion Control Seeding Culvert Installation Earthwork Excavation
Quinn Construction, Inc. 14639 Wagner Lane Rapid City SD 57701	Julie Suhr Phone: (605)787-6500 Fax: (605)787-6789 Email: julie@quinnconstruction.org DBE - Y ACDBE - N	N Statewide	Y	237110 237310 238910	Box culverts Excavation Grading Sewer and water lines installation Site preparation Retaining walls Gabions Bank stabilization Utility trenching
Raimonde Drilling Corporation 770 W. Factory Road Addison IL 60101	Anne Leslie Phone: (630)458-0590 Fax: (630)458-0914 Email: rdcdriill@rdc-drill.com DBE - Y ACDBE - N	N Statewide	Y	237110 237990 238910	Site preparation Waterlines Civil engineering Drilling-Enviromental, Geotechnical, Rock Core, Air Rotary, and Offshore Soil Sampling

**South Dakota Department of Transportation
 Roster of Certified DBE Firms - - Highway construction**

Highway Work

Firm Name / Address	Contact Name Phone	B N D	Work Area	Highway Work			NAICS	Services Performed
				M B E	MW B E	WW B E		
Rehbein Enterprises, Inc. PO Box 1119 Plains MT 59859	Kahneedah Rehbein Phone: (406)883-5472 Fax: (406)883-5471 Email: celeste@rehbeinenterprises.com DBE - Y ACDBE - N	N	Statewide			Y	115112 115310 236115 236116 236210 236220 237110 237210 237310 237990 238990	Building construction and remodeling Fencing Grading Sewer and water lines installation Signing Seeding Hydro-seeding Earthwork Excavation Home Construction and remodeling Land subdividing and utility installation Hydro-mulching Forest Fire Equipment Rental Commercial and Institutional Building Construction Renovation Stream Restoration Mine Reclamation Irrigation Systems and Flumes
RHS, Inc. 11700 Sturgis Rd Black Hawk SD 57718	Stacey Roselles Phone: (605)787-4745 Fax: (605)787-7103 Email: rhsinc@rushmore.com DBE - Y ACDBE - N	N	western half of SD			Y	237310	Signing Traffic Control Roadway painting/stripping Grooving for pavement marking
RMR Enterprises, LLC PO Box 55 Hamer SC 29547	Beverly Gurley Phone: (843)506-2486 Fax: () - Email: rmrtransportation@gmail.com DBE - Y ACDBE - N	N	Statewide			Y	238910 484220 541611 561730	Hauling - gravel, dirt, materials Landscaping Clearing & grubbing Consultant - business, management
Rock On Enterprises Inc 3100 7th St S Waite Park MN 56387	Krystal Vierkant Phone: (320)230-2998 Fax: (320)230-2912 Email: krystal@rockontrucks.com DBE - Y ACDBE - N	N	Statewide			Y	484220	Hauling - gravel, dirt, materials

South Dakota Department of Transportation
 Roster of Certified DBE Firms - - Highway construction

Highway Work

Firm Name / Address	Contact Name Phone	B N D	Work Area	Highway Work			NAICS	Services Performed
				M B E	MW B E	WW B E		
Rock On Trucks Inc 3100 7th St S Waite Park MN 56387	Krystal Vierkant Phone: (320)230-2998 Fax: (320)230-2912 Email: krystal@rockontrucks.com DBE - Y ACDBE - N	N	Statewide			Y	532120	Trucking broker
S & L Industrial PO Box 126 Cowley WY 82420-0126	David Rael Phone: (307)548-2242 Fax: (307)548-2678 Email: bids@tctwest.net DBE - Y ACDBE - N	N	statewide			Y	237310	Painting - bridges, commercial Signing Traffic Control Lead paint abatement Striping
Seurer Trucking, LLC PO Box 294 Hoven SD 57450	Heidi Seurer Phone: (605)321-5837 Fax: () - Email: heti@venturecomm.net DBE - Y ACDBE - N	N	Statewide			Y	484220	Hauling - gravel, sand, dirt, rock
Silverstar Inc d/b/a Mann Trucking PO Box 747 Dickinson ND 58601-0747	Janice Wandler Kouba Phone: (701)264-1168 Fax: (701)264-1165 Email: manntrucking@ndsupernet.com DBE - Y ACDBE - N	N	Northern and western S			Y	484121	Hauling - liquid asphalt, bulk petroleum products
Skyview Construction Co LLC 15052 455th Ave. Summit SD 57266	Gerry Adolph Phone: (605)520-0555 Fax: (605)398-5157 Email: gadolph854@aol.com DBE - Y ACDBE - N	N	Installing - NE SD, Supr			Y	237310 423390	Erosion Control Supplier - seed Seeding Supplier - erosion control materials Supplier - silt fence Supplier - fertilizer

South Dakota Department of Transportation
 Roster of Certified DBE Firms - - Highway construction

Highway Work

Firm Name / Address	Contact Name Phone	B N D	Work Area	Highway Work			NAICS	Services Performed
				M B E	MW B E	WW B E		
Surface Prep & Maintenance 4430 Bennie Lane Reno NV 89512	Ann Church Phone: (775)823-7882 Fax: (775)358-7362 Email: surfacepandm@gmail.com DBE - Y ACDBE - N	N	Statewide			Y	237310 238990	Asphalt paving Striping
Traffic Services Company LLC 11740 J B Rd Black Hawk SD 57718	J D Wetsit Phone: (605)716-0250 Fax: (605)716-0260 Email: tsc@trafficservicescompany.com DBE - Y ACDBE - N	N	Statewide			Y	237310	Signing Traffic Control Pavement marking
Twisted Sister Trucking, LLC 46484 258th St. Hartford SD 57033	Jennifer Waege Phone: (605)360-0937 Fax: () - Email: jenniferwaege@live.com DBE - Y ACDBE - N	N	Statewide			Y	484220	Trucking Hauling - Asphalt, gravel, rock, sand
Wharton Asphalt LLC 3962 PA Hollow Trail Billings MT 59106	Lena Wharton Phone: (406)254-9571 Fax: (406)254-9572 Email: WhartonAsphalt@netzero.com DBE - Y ACDBE - N	N	Statewide			Y	237310	Crack sealing Asphalt paving - parking lots/county roads
Word Reclamation & Fencing, Inc. 20490 Bison Pl Pierre SD 57501	David Word Phone: (605)280-0860 Fax: (605)224-0829 Email: wordrf@yahoo.com DBE - Y ACDBE - N	N	statewide			Y	237310 238990	Fencing Erosion Control Seeding

March 07, 2022

**South Dakota Department of Transportation
Roster of Certified DBE Firms - - Highway construction**

Highway Work

Firm Name / Address	Contact Name Phone	B N D	Work Area	Highway Work			NAICS	Services Performed
				M E	MW E	WW E		
Yellowstone Environmental Contracting LLC PO Box 998 Miles City MT 59301	Kara Mader Phone: (406)234-5078 Fax: (406)234-5084 Email: yecllc@gmail.com DBE - Y ACDBE - N	N	Statewide		Y		237310 561730	Erosion Control Landscaping

South Dakota Department of Transportation
 Roster of Certified DBE Firms - - Highway construction

Non-Highway Work

Firm Name / Address	Contact Name Phone	B N D Work Area	M B E MW B E WW E	NAICS	Services Performed
5 Star Enterprise, Inc. PO Box 43545 Atlanta GA 30336	Tracey Felder Phone: (404)924-4290 Fax: (404)699-5406 Email: tfelder@5starchemicals.com DBE - Y ACDBE - Y	N Statewide	Y	325199 325611 424690	Airport concessionaire Supplier - industrial cleaning supplies Manufacturer - Industrial Cleaners, solvents, detergents, and janitorial produc
Ace Airport Media LLC 1112 S Holly Dr Sioux Falls SD 57105-0218	Angela Ellerbroek Phone: (605)351-5515 Fax: () - Email: etc.mag@sio.midco.net DBE - Y ACDBE - Y	N Sioux Falls	Y	541850	Airport advertising Airport concessionaire
Atlantic Petroleum & Mineral Resources, Inc. dba A 1445 North Loop West #242 Houston TX 77008	Anthony Ndah Phone: (713)223-2767 Fax: (713)223-5797 Email: sales@atlanticpetro.com DBE - Y ACDBE - Y	N Statewide	Y	424690 424710 424720 425120	Supplier - petroleum products Supplier - Antifreeze Supplier - motor fuels, lubricants, propane Supplier - Chemical and Fuel Storage Equipment
Brady Co., Inc. dba A2Z Staffing Solutions dba Adr 50 West 14th Street, Suite 300 Helena MT 59601	Anna Kazmierowski Phone: (406)443-7664 Fax: () - Email: anna@a2zmontana.com DBE - Y ACDBE - N	N Statewide	Y	541214 541219 561110 561311 561320 561499	Temporary Employment Agency Accounting and Payroll Services
Catalystlinks, Inc. 2330 Scenic Highway South Suite 475 Snellville GA 30078	S. Stewart Phone: (770)242-1970 Fax: () - Email: sks@catalystlinks.com DBE - Y ACDBE - N	N Statewide	Y	423610 541618	Consultant - Management Consulting Services Supplier - eletrical equip.(wireless, wired, security)

South Dakota Department of Transportation
 Roster of Certified DBE Firms - - Highway construction

Non-Highway Work

Firm Name / Address	Contact Name Phone	B N D Work Area	M B E	MW B E	WW B E	NAICS	Services Performed
Comcentia, LLC 1025 W. Glen Oaks Lane Mequon WI 53092	Dele Ojelabi Phone: (414)871-1100 Fax: (414)877-3430 Email: info@comcentia.com DBE - Y ACDBE - N	N Statewide	Y			518210 541430 541511 541512	Program Management Custom Software Development Web Application Development Software Integration Web Hosting Web & Graphic Design
Construction Recruiters America Staffing, Inc. 3309 Northlake Blvd., Suite A102 West Palm Beach FL 33403	Diane Gurdak Phone: (954)533-1689 Fax: (888)457-3336 Email: diane@crastaffing.com DBE - Y ACDBE - N	N Statewide			Y	561320	Temporary Employment Agency
Davis Freight Management, Inc. 13238 Broadway Alden NY 14004	Doug Haak Phone: (716)902-4244 Fax: (716)902-4243 Email: doug@shipdavisfreight.com DBE - Y ACDBE - N	N Statewide			Y	484121 484220 488510 493110 541614	Logistics for Transportation, Warehousing, Distribution Service
DKMG Consulting, LLC 6368 Cook Rd. Guilford IN 47022	Rhona DiCamillo Phone: (312)802-0429 Fax: (904)285-0825 Email: rdicamillo@dkmgconsulting.com DBE - Y ACDBE - N	N Statewide			Y	541219 541611 541690	Misc. Accounting Services (Aviation Industry) Business Management Consulting (Aviation Industry) Transportation Forecasting (Aviation Industry)

South Dakota Department of Transportation
 Roster of Certified DBE Firms - - Highway construction

Non-Highway Work

Firm Name / Address	Contact Name Phone	B N D Work Area	M B E	MW B E	WW B E	NAICS	Services Performed
Educators 4 Education 527 Primos Ave Folcroft PA 19032	Anthony Singleton Phone: (215)792-3171 Fax: () - Email: asingleton@educators4education.org DBE - Y ACDBE - N	N Statewide	Y			611710	Educational support services
EJO Ventures PO Box 1551 Goodlettsville TN 37070	Edward Odom Phone: (615)347-2173 Fax: () - Email: ej@ejoventures.net DBE - Y ACDBE - N	N Statewide	Y			237130 238210 517311 517312 517410 517919 541512 561621	Cable Splicing, electrical or fiber optic Electronic control installation & service Fiber optic cable (except transmission lines) installation Telephone communications resellers (except satellite) Systems integration design consulting services, computer Systems integration design services, computer Computer and network cable installation
Expert Approach, Inc. 1100 W. Cherry St. Vermillion SD 57069	LD Herrera Phone: (605)655-2182 Fax: (703)229-8691 Email: LD@ExpertApproach.com DBE - Y ACDBE - N	N Statewide	Y			518210 541511 541512 541519 541613 561499 561920	Information technology services Computer installation and training Supplier - computer hardware/software Hardware/software re-seller
Florida Cleaning Systems, Inc. dba FCS Facility Se 624 Douglas Ave., Suite 1420 Altamonte Springs FL 32714	Giovanna Barrios Phone: (407)268-4035 Fax: (407)268-4037 Email: certs@fcsiservices.com DBE - Y ACDBE - Y	N Statewide	Y			561720	Janitorial Services

South Dakota Department of Transportation
 Roster of Certified DBE Firms - - Highway construction

Non-Highway Work

Firm Name / Address	Contact Name Phone	B N D	Work Area	Non-Highway Work			NAICS	Services Performed
				M B E	MW B E	WW B E		
Flying Leap, Inc. 2854 North Hills Drive NE Atlanta GA 30305	Anita Leopold Phone: (404)234-5474 Fax: (404)393-3569 Email: anita@flyingleapnow.com DBE - Y ACDBE - Y	N	Statewide			Y	448150 451212 452319 453220 541611 812331	Airport concessionaire Airport gift shop Consultant - Administrative Management Uniform Supply Service, Non-Industrial Newsstands
GIA Group 1301 2nd Avenue South Ste A340 Minneapolis MN 55403	Joseph Smith Jr. Phone: (763)783-7487 Fax: () - Email: clients@gjallcservices.com DBE - Y ACDBE - N	N	Statewide			Y	236115 236116 236118 236220 531320 541611 541910 541990	Consultant - construction management Construction management Real Estate Consulting and Valuation
Global Parking Systems, LLC 6600 Plaza Drive, Suite 307 New Orleans LA 70127	Ronald Burns, Jr. Phone: (504)246-1668 Fax: (504)246-6312 Email: vburns@parkglobal.net DBE - Y ACDBE - Y	N	Statewide			Y	485999 561720 812930	Parking management Valet parking Shuttle Services Janitorial Services
Gordon Contracting 25744 Mapleton Rd Renner SD 57055	Larry Gordon Phone: (605)521-4203 Fax: () - Email: larrygordon40@yahoo.com DBE - Y ACDBE - N	N	Statewide			Y	128140	Tuck pointing Caulking Masonry restoration
Great Plains Diversified, Inc. 18 W. 8th Avenue Redfield SD 57469	Faye Huminski Phone: (727)210-7652 Fax: () - Email: GPDinc@pm.me DBE - Y ACDBE - N	N	Statewide			Y	425120	Broker - Durable Goods

South Dakota Department of Transportation
 Roster of Certified DBE Firms - - Highway construction

Non-Highway Work

Firm Name / Address	Contact Name Phone	B N D Work Area	M B E	MW B E	WW B E	NAICS	Services Performed
Hawk Health & Safety, LLC PO Box 642 Slinger WI 53086	Ronald Spoerl Phone: (833)548-2603 Fax: () - Email: ron.spoerl@hawkhealthandsafety.com DBE - Y ACDBE - N	N Statewide	Y			423450 621111 621399 621493 621498 621999	On-Site Health Clinics Direct Response Mobile Health Safety Staff and Training Workplace on-site & mobile minor health assistance
HR Consultants, Inc. 160 Jari Drive Suite 180 Johnstown PA 15904-6848	Jonna Contacos-Sawyer Phone: (814)266-3818 Fax: (814)266-0189 Email: info@hrconsults.com DBE - Y ACDBE - N	N All of SD			Y	541219 541611 541612 611430 611710	Consultant - business, management Professional & management development training
Hubpoint Strategic Advisors, LLC PO Box 1437 Davidson NC 28036	Douglas Banez Phone: (704)408-7136 Fax: () - Email: dbanez@hubpointadvisors.com DBE - Y ACDBE - N	N Statewide	Y			541614 541618	Consultant - Aviation, transportation, & logistics sectors
IMEX Cargo, LLC PO Box 627 Revere MA 02151	Michelle DeFronzo Phone: (617)718-4639 Fax: (877)515-1215 Email: michelle@imexcargo.com DBE - Y ACDBE - N	N Statewide			Y	488510 488991 488999	3rd Party Logistics General Sales Agent Freight Forwarding

**South Dakota Department of Transportation
 Roster of Certified DBE Firms - - Highway construction**

Non-Highway Work

Firm Name / Address	Contact Name Phone	B N D	Work Area	M B E	MW B E	WW B E	NAICS	Services Performed
Independence Siding Co., LLC dba Independence Cons 8084 Erickson Ranch Road Rapid City SD 57702	WoAbba Potter Phone: (605)431-7718 Fax: () - Email: onewopo@gmail.com DBE - Y ACDBE - N	N	Statewide			Y	238160 238170 238350 541611	Roofing Window installation Siding Project Management - Home Constuction Deck installation
Intuitive Business Concepts, LLC 1910 Towne Centre Blvd., Suite 250 Annapolis MD 21401	Joanne Sawyer Phone: (443)603-0215 Fax: (410)558-6789 Email: partners@ibconcepts.com DBE - Y ACDBE - N	N	Statewide			Y	518210 541511 541512 541513 541519	Custom Software Development Software Development Custom Computer Programming Software Installation
JCM1 125 Half Mile Rd., Suite 200 Red Bank NJ 07701	Jeffrey Martin Phone: (732)337-4954 Fax: () - Email: jcm1llcnj@gmail.com DBE - Y ACDBE - Y	N	Statewide			Y	522320 812990	Credit Card Processing Services Merchant Processing
Keleusmatic Technologies 8362 Pines Boulevard #131 Pembroke Pines FL 33024	Michael Yu Phone: (954)543-5701 Fax: (954)543-5711 Email: michael.yu@keleusmatic.com DBE - Y ACDBE - N	N	Statewide			Y	238210 541512 541618	Information technology services Telecom and Business Systems Design, Build, and Integration Consultancy
KFH Group, Incorporated 4920 Elm Street, Suite 350 Bethesda MD 20814	Sue Knapp Phone: (301)951-8660 Fax: (301)951-0026 Email: sknapp@kfhgroup.com DBE - Y ACDBE - N	N	Statewide			Y	541330 541370 541611 541613 541614	Consultant engineering Transportation planning

**South Dakota Department of Transportation
 Roster of Certified DBE Firms - - Highway construction**

Non-Highway Work

Firm Name / Address	Contact Name	B N D	Work Area	M B E	MW B E	WW B E	NAICS	Services Performed
Koch Hazard Architects 431 N. Phillips Ave., Suite 200 Sioux Falls SD 57104	Brooke Wegener	N	Statewide				Y 541310 541410	Architectural design services for new and renovation Interior Design services
Lens Consulting Firm, LLC 2108 Star Sapphire Drive Raleigh NC 27610	Michelle Weathersby	N	Statewide				Y 541611 541612 541613 541614 541618 611430 611710 624310	Consultant - business, management Consultant - Human resource consulting services
Lenzie Henderson, LLC 15110 Kestrelglen Way Lithia FL 33547	Lenzie Henderson	N	Statewide				Y 541611 541612 541613 541614 611430	Consultant - Administrative Management Consultant - Management/Professional development Training Consultant - Logistics management consulting services Consultant - Customer services management services Consultant - Human resource consulting services
Leslie Saunders Insurance Agency, Inc. 4584 North Rancho Drive Las Vegas NV 89130	Quincy Branch	N	statewide				Y 488190 524210 524298 541612 541613 611430	Airport concessionaire Rental car insurance Consultant - customer service training Insurance Agency
Longhouse Inventory Solutions, LLC PO Box 1212 Claremore OK 74018	Jami Jones	N	Statewide				Y 332439 423990	Airport concessionaire Supplier of Child Safety Seats, Car seat storage bags, Vinyl tags, Security Lo Manufacturer - Security Key Drops

South Dakota Department of Transportation
 Roster of Certified DBE Firms - - Highway construction

Non-Highway Work

Firm Name / Address	Contact Name Phone	B N D Work Area	M B E	MW B E	WW B E	NAICS	Services Performed
M2, Inc. 101 Riverside Drive Pierre SD 57501	Michala Shryock Phone: (605)280-4840 Fax: () - Email: michala.m2inc@gmail.com DBE - Y ACDBE - N	N Statewide				Y 425120	Broker - Casework
M3 Sixty, LLC 1387 Cope Ave. East Maplewood MN 55109	Kelly McCarty Phone: (651)202-2660 Fax: () - Email: kelly@m3-sixty.com DBE - Y ACDBE - N	N Statewide				Y 425120	Broker - Metal panel materials for buildings
Marr Arnold Planning, LLC 1328 California Avenue Ames IA 50014	Summer Marr Phone: (515)231-0344 Fax: () - Email: summer@marrarnoldplanning.com DBE - Y ACDBE - N	N Statewide				Y 488190 541611	Transportation planning Airport consultant/studies/planning Consultant - Administrative Management
Mary A. Lynch 5719 Overridge Drive Arlington TX 76017	Mary Lynch Phone: (817)478-3308 Fax: () - Email: MALynch316@aol.com DBE - Y ACDBE - N	N Statewide				Y 488119 488190 541611 541613 541618	Airport consultant/studies/planning

South Dakota Department of Transportation
 Roster of Certified DBE Firms - - Highway construction

Non-Highway Work

Firm Name / Address	Contact Name Phone	B N D	Work Area	M B E	MW B E	WW B E	NAICS	Services Performed
MCC Industries 3648 Snelling Ave. South Minneapolis MN 55406	Ken McCraley Phone: (612)627-9038 Fax: (612)378-1200 Email: ken@kmsclean.com DBE - Y ACDBE - N	N	Statewide	Y			236210 236220 238130 238220 238310 238350 238390 561210 561790 562910	Framing Remediation Services Finished Carpentry and Drywall Commercial and Residential Air Duct Cleaning Asbestos, Lead Paint, and Other Toxic Material Abatement
Meehan Consultants 2522 W. 41st Street, #167 Sioux Falls SD 57105	Dionne Meehan Phone: (605)299-2636 Fax: () - Email: MeehanFSC@gmail.com DBE - Y ACDBE - N	N	Statewide		Y		541614 541690	Consultant - OSHA general industry safety training Consultant - Food manufacturing safety training Consultant - FDA & USDA consulting services Consultant - regulatory compliance and consulting
Mountain West Drivers Corp PO Box 150251 Ogden UT 84415-0251	Lisa Stokes Phone: (801)388-7198 Fax: (801)475-4078 Email: mountainwestdrivers@gmail.com DBE - Y ACDBE - Y	N	Rapid City & Sioux Falls		Y		488490	Provide drivers for rental car companies
North American Safety Products, Inc. 8910 W. 192nd Street, Unit C Mokena IL 60448	Nicole Pfeiffer Phone: (800)475-6946 Fax: (815)469-2131 Email: nicole@naspinc.com DBE - Y ACDBE - N	N	Statewide			Y	332323 332999 334290	Manufacturer - Steel safety barricades & cages

**South Dakota Department of Transportation
 Roster of Certified DBE Firms - - Highway construction**

Non-Highway Work

Firm Name / Address	Contact Name Phone	B N D Work Area	M B E	MW B E	WW B E	NAICS	Services Performed
NovaRest, Inc. 156 W Calle Guija Suite 200 Sahuarita AZ 85629	Donna Novak Phone: (520)908-7246 Fax: (772)673-0318 Email: corp@novarest.com DBE - Y ACDBE - N	N Statewide				Y 524298 541612	Consultant - Actuarial
OMG Its Gluten Free, LLC 10319 Vans Drive, Unit A Frankfort IL 60423	Melanie Helfrich Phone: (815)469-4900 Fax: (815)469-0094 Email: Melanie@omgitsglutenfree.com DBE - Y ACDBE - Y	N Statewide				Y 311811 311812 311821 311991 424490	Produces gluten free baked goods, entrees and pizzas Sells gluten free baked goods, entrees and pizzas
P3 Infrastructure, Inc. 671 McCauley Rd. Stow OH 44224	Puneet Singh Phone: (330)408-9501 Fax: () - Email: accounting@p3-i.com DBE - Y ACDBE - N	N Statewide				Y 325510	Manufacturer - Paint & Coating
Pacific Park Management, Inc. 311 California St., Suite 310 San Francisco CA 94104	Behailu Mekbib Phone: (415)434-4400 Fax: (415)434-4455 Email: bmekbib@pacificparkonline.com DBE - Y ACDBE - Y	N Statewide				Y 541618 812930	Parking management Parking lots and garages
Petri Construction, Inc. 48290 N. Hiawatha Pl. Canton SD 57013	Michael Petri Phone: (605)360-1834 Fax: () - Email: mike.petri.construction@gmail.com DBE - Y ACDBE - N	N Eastern & Southeastern				Y 236115 236116 236118 236220	Building construction and remodeling Seamless rain gutters

South Dakota Department of Transportation
 Roster of Certified DBE Firms - - Highway construction

Non-Highway Work

Firm Name / Address	Contact Name	B	M	MW	WW	NAICS	Services Performed
	Phone	N	B	B	B		
	D	Work Area	E	E	E		
Recruiting and Placement, Inc. 601 S. Phillips Ave., Suite 101 Sioux Falls SD 57104	Amy DeBerg Phone: (605)274-8800 Fax: () - Email: amy@randpgroup.com DBE - Y ACDBE - N	N				541612	Executive search/recruitment/placement
ReEngine Consulting, LLC 906 House Creek Dr. Leander TX 78641	Alfredo Mycue Phone: (512)850-9409 Fax: () - Email: Alfredo@ReEngineConsulting.com DBE - Y ACDBE - N	N	Statewide	Y		541611 541612 541618 561110 611430 611710 923110 926110	Consultant - business, management Consultant - Administrative Management Consultant - General Management Services
ReMedi Health Solutions, LLC 20333 TX-249 Suite 224 Houston TX 77070	Sandeep Hyare Phone: (713)264-2414 Fax: () - Email: s.hyare@remedihs.com DBE - Y ACDBE - N	N	Statewide	Y		519190 541611	Health Care Consulting Services
RLS & Associates, Inc. 3131 S. Dixie Hwy Suite 545 Dayton OH 45439	Robbie Sarles Phone: (937)299-5007 Fax: (937)299-1055 Email: RLS@rlsandassoc.com DBE - Y ACDBE - N	N	Statewide	Y		541618 561499	Consultant - business, management

South Dakota Department of Transportation
 Roster of Certified DBE Firms - - Highway construction

Non-Highway Work

Firm Name / Address	Contact Name Phone	B N D	Work Area	M B E	MW B E	WW B E	NAICS	Services Performed
Seven Fires Business Solutions, LLC PO Box 4061 Bismarck ND 58502	Bill Condon Phone: (701)751-1964 Fax: (701)751-1035 Email: bill@sevenfires.com DBE - Y ACDBE - Y	N	Statewide	Y			323111 423850 424120 442110 453210 453998 532420 541430	Supplier - Office Products, Supplies, & Furniture Supplier - Janitorial products, cleaning supplies & equipment Graphic Design - Uniforms, logos & promotional products
Shea Ventures, Inc. 12133 County Road 1 Eden SD 57232	Kylee Shotkoski Phone: (605)376-5546 Fax: () - Email: kyleeshea89@gmail.com DBE - Y ACDBE - N	N	NE & SE South Dakota		Y		236117 236118 238320 541611	Home Construction and remodeling Painting - home interior Project Management - Home Constuction Consultant - Client Consulting Home Construction
Solicit Free Donations, LLC 2522 W. 41st Street, #167 Sioux Falls SD 57105	Dionne Meehan Phone: (605)299-2636 Fax: () - Email: info@solicitfreedonations.org DBE - Y ACDBE - N	N	Statewide		Y		813219	Fee based firm for anonymous donors to donate to non-profit organizations
Strike Group Security Services, LLC 6309 W. 58th Street Sioux Falls SD 57106	Joni Brunkow Phone: (605)940-1577 Fax: () - Email: Joni@strikegroupsecurityservices.com DBE - Y ACDBE - N	N	statewide		Y		561612	Security Guards and Patrol services

South Dakota Department of Transportation
 Roster of Certified DBE Firms - - Highway construction

Non-Highway Work

Firm Name / Address	Contact Name	B N D	Work Area	M B E	MW B E	WW B E	NAICS	Services Performed
Stronghold Building and Supply, Inc. PO Box 633 FORT PIERRE SD 57532	Josh Lieberman	N	Statewide	Y			236115 236116 236118 236220 237990 238110 238910	Building construction and remodeling Excavation Site preparation Construction management
Success Strategies, Inc. 94 Merrymount Road Quincy MA 02169	Paula Stanziani	N	Statewide			Y	541430 541511 561410	Graphic Design Technical Writing Software Development Marketing Writing Custom Computer Programming Document Preparation Service
Synergy Development Limited 1000 S. Clark, Suite 2418 Chicago IL 60605	Robin Aikens	N	Statewide			Y	236220 238990 424330 541611 561720	Construction management Building construction cleanup Consultant - Administrative Management Consultant - General Management Services Unisex clothing merchant wholesalers Building cleaning services
Terrazzo USA and Associates, Inc. 9532 Towry Court Oklahoma City OK 73165	Sherry Hill	N	Statewide			Y	238340	Pour Terrazzo flooring

South Dakota Department of Transportation
 Roster of Certified DBE Firms - - Highway construction

Non-Highway Work

Firm Name / Address	Contact Name Phone	B N D Work Area	M B E	MW B E	WW B E	NAICS	Services Performed
The 106 Group Ltd 1295 Bandana Blvd N, Suite 335 St. Paul MN 55108	Jennifer Kust Phone: (651)290-0977 Fax: () - Email: JenniferKust@106group.com DBE - Y ACDBE - N	N Statewide		Y		541430 541620 541720 541990	Consultant - cultural resources Consultant - historical preservation Tribal consultation Interpretative planning Archaeology Architectural History Community Engagement
The Forrest Group LLC 1422 N. Curson Ave., Ste. 9 Los Angeles CA 90046	Allen Forrest Phone: (619)808-9798 Fax: () - Email: ceo@tf gla.com DBE - Y ACDBE - Y	N Statewide	Y			453220 512110 541613 541810 541840 541850 541860 541870 541890 541910 561599 711130 711320 711510 722310 722514 722515 812990	Airport concessionaire Event management Advertising and public relations Film & Television Production Travel Reservation Services
Trinity Technology Services, Inc. 537 W. Taft Drive South Holland IL 60473	George Kinnison Phone: (877)587-9847 Fax: (708)596-1020 Email: gkinnison@trinitytechservices.com DBE - Y ACDBE - N	N Statewide	Y			238210 238220 423610 423730 425110 541380 541614 561320 811213	Electrical contracting - buildings Communications cabling & systems Heating & cooling

**South Dakota Department of Transportation
 Roster of Certified DBE Firms - - Highway construction**

Non-Highway Work

Firm Name / Address	Contact Name Phone	B N D	Work Area	M B E	MW B E	WW B E	NAICS	Services Performed
Tyler Communications, Inc. 715 Peachtree St., Suite 100 Atlanta GA 30308	Tony Tyler Phone: (470)378-1251 Fax: () - Email: tony.tyler@tylercommunications.net DBE - Y ACDBE - Y	N	statewide	Y			425120 561110 561990 611420 611430 611513 611691 611710 722511	Office administrative services Computer training Professional & management development training Apprenticeship training Exam preparation & tutoring Educational support services Full Service Restaurant in airport
US Eco Products Corporation PO Box 213 West Newbury MA 01985	Doreen Blades Phone: (978)457-9229 Fax: (978)373-9817 Email: doreen@usecoproducts.com DBE - Y ACDBE - Y	N	Statewide			Y	423850 424690 424990	Supplier - Alternative Green, Environmental Products Supplier - Products to replace road salt, Magnesium Chloride Supplier - Absorbents, Bio-Remedial Cleaners & Degreasers Supplier - Pesticides & Nursery Supplies Supplier - Solvents found on the USDA's Catalog & Part of ISO 14001
Valley Illuminators 1003 S. Pearl Street #B11 Tacoma WA 98465	Polly Valley Phone: (253)565-6946 Fax: () - Email: pollyv@zipcon.com DBE - Y ACDBE - N	N	statewide			Y	335129 339950	Manufacturer - L-853 retro-reflective edge markers for runways Supplier - windsocks, airfield signs & lights